



Because the little things matter

Enjoy an ABI life

HOLIDAY HOMES | 2026 COLLECTION





# The simple pleasure of time well spent

Wake up where the air feels fresher and endless skies are painted with vibrant colour. Energy is invigorated with the warmth and wonder of where the day can take you. Rest, rejuvenate and get ready to explore, you're on your ABI break now. The journey to joyful times begins here, where magical moments and memories await. Embrace the feeling of putting your feet up after a fun-filled day of discovery or savour every gentle minute of a well-earned escape into relaxation.

Wherever you find yourself, every detail has been considered to create experiences you can treasure.

One destination. Limitless experiences.	4-5
Loads to feel good about	6-7
Everyone's kind of ABI Life	8-9
Building the best experiences	10-11
Our 2026 Collection	12-83
The Coworth	12-17
The Keswick	18-23
The Wimbledon	24-29
The St David	30-35
The Beverley	36-41
The Derwent	42-47
The Windermere	48-53
The Ingleton	54-59
The Langdale	60-65
The Ambleside	66-71
The Balmoral	72-77
The Westwood Lodge	78-83
Key features & specifications	84-87





# The simple pleasure of time well spent

Wake up where the air feels fresher and endless skies are painted with vibrant colour. Energy is invigorated with the warmth and wonder of where the day can take you. Rest, rejuvenate and get ready to explore, you're on your ABI break now. The journey to joyful times begins here, where magical moments and memories await. Embrace the feeling of putting your feet up after a fun-filled day of discovery or savour every gentle minute of a well-earned escape into relaxation.

Wherever you find yourself, every detail has been considered to create experiences you can treasure.

One destination. Limitless experiences.	4-5
Loads to feel good about	6-7
Everyone's kind of ABI Life	8-9
Building the best experiences	10-11
Our 2026 Collection	12-83
The Coworth	12-17
The Keswick	18-23
The Wimbledon	24-29
The St David	30-35
The Beverley	36-41
The Derwent	42-47
The Windermere	48-53
The Ingleton	54-59
The Langdale	60-65
The Ambleside	66-71
The Balmoral	72-77
The Westwood Lodge	78-83
Key features & specifications	84-87



# One destination. Limitless experiences.

The splendour and breadth of the picturesque and colourful destinations our country has to offer are something to be truly revered. From coastline to countryside, our little island is adorned with a rich abundance of landscapes that enchant and enamour, for a holiday destination with distinctive charm and areas of outstanding natural beauty, just waiting to be discovered.

Enriched with many vistas to awaken and inspire, quaint villages with characterful cottages, rolling hills that melt into misty horizons, and wild, epic coastlines. This country is woven with remarkable destinations that are as varied as they are beautiful, providing a stunning backdrop in any season for a Great British getaway.

From the sun-soaked coves of Cornwall to stories etched in the stones of Hadrian's Wall, exquisite, scenic and steeped in history, every inch of the UK invites you to explore it. Every long-awaited moment of an

eagerly anticipated getaway holds endless places to wander, wonder and welcome every adventure, where there will always be something new to uncover.

Sink bare toes into sandy beaches, welcome the first bracing tingle of sea on skin, soak up a salty breeze on a cliff top stroll or cultivate culinary palettes with suppers by the shoreline. Take in every new experience, awaken your senses and let curiosity wash over you, because you never know what you might find.

*From the sun-soaked coves of Cornwall to stories etched in the stones of Hadrian's Wall, exquisite, scenic and steeped in history, every inch of the UK invites you to explore it.*



# Loads to feel good about.

On top of all the little things we do to make you feel good every time you step inside your ABI, we're also doing good beyond your holiday home. From supporting charities and local communities, to looking after our planet and our people. Hopefully, it'll put even more of a smile on your face.

## Doing good for the planet

From how thermally efficient our holiday homes are, to offsetting carbon, even how we make this very brochure, we've got our green hat on. We're committed to doing our bit to protect this planet, hopefully for staycations in many years to come.



## Good deeds for charities

We usually work with four local charities, but we're pleased to go one better with five good causes this year. The ABI team have chosen MND Association, Baggy Trousers UK, Butterflies Memory Loss Support Group, Sarcoma UK, and Cherry Tree Community Association to receive our support for the next two years.

We're honoured to support these chosen charities and to be able to provide updates on how the donations make a real difference year-on-year.

## Supporting the local community

Never ones to pass up the opportunity to help where we can, we're pleased to have been able to make good use of materials we no longer need. A number of local charities have been able to benefit from materials we had left over from manufacturing in helping with fundraising and supporting people in need. We'll continue to make sure we're not letting anything go to waste, especially when it could have a useful second life somewhere else.

Along with our sponsorship of youth teams in the local area, ABI UK are now proud sponsors of Beverley Town Football Club. It's another way in which we're supporting our local community and another reason to feel good about choosing ABI.

## Offsetting the carbon of every ABI build



For every ABI we build, we plant a tree in the UK and support Carbon Neutral Organisation projects around the world. We aim to reduce the impact of carbon emissions generated during our production process.

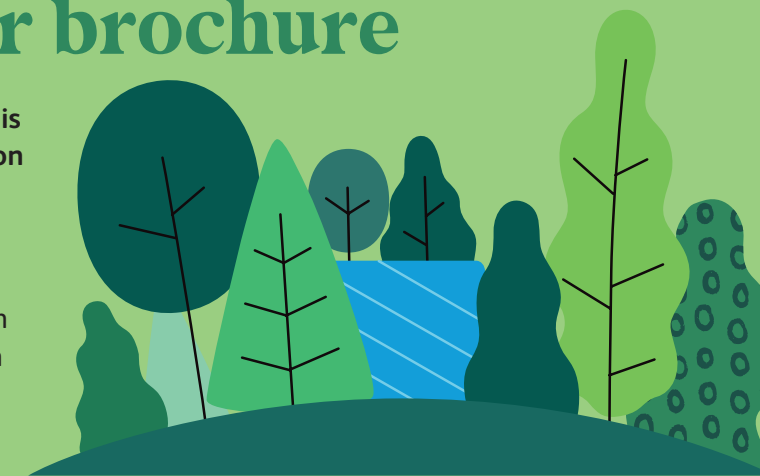
The trees we plant here in the UK, in conjunction with schools across the country, offset the carbon created by manufacturing each holiday home over the tree's lifetime.

The other projects we support around the world immediately offset any carbon created when we build your ABI.

## A greener brochure

Every page you'll turn in this brochure is a piece of carbon balanced paper.

That means the emissions created in the process of making the paper have been offset (or balanced) through the World Land Trust. Every page is a good 'un, in a green sense.



## Good to our people

We were the first holiday home manufacturer in the UK to become an accredited Living Wage Employer. All the ABI team have access to a team of Mental Health First Aiders, and we now offer PSA screenings to help identify any prostate problems, including cancer, early.



## Thermally efficient holidaying

We pride ourselves on creating holiday homes that have a high thermal performance, and not just for your comfort. Our technical experts dedicate their efforts to making your holiday home thermally efficient, which is good news for the environment too.

*Wait, there's even more...*

*It's impossible to fit all the great things happening at ABI into just two pages! That's why we're working on regular online updates so we can show you how we're always looking for new ways to do better.*





Because the little things matter

## Everyone's kind of ABI life.

Creating special moments and lifelong memories, that's the ABI life. Capturing lively games nights or a sunset with a nice glass of red. Relive your favourite ABI memories, whether that's cuppas on the deck or bike rides by the beach.

Everyone's caravan life is different. But there is something for everyone with ABI. Why not share your holiday experiences with us? Post your ABI memories to our social channels: @ABIHolidayHomes.

Enjoy an ABI life





# Building the best experiences.

No end of thoughtful ideas. High-quality materials, hours of dedicated craft, rigorous testing and checks - that's our commitment to exceptional quality when building your holiday home.

No matter which ABI you choose, all of these features are included as standard:

- ✓ 100mm insulation in roof
- ✓ Upgraded external walls with 50mm insulation (except The Coworth)
- ✓ Domestic gutters and downpipes
- ✓ Domestic style internal doors
- ✓ Domestic mattresses (3 times more filling and more durable covering)
- ✓ Crib 5 mattresses throughout
- ✓ Electric fire (except The Coworth)
- ✓ Thermostatic shower mixer valve
- ✓ Underlay in carpeted area (except The Coworth bedrooms)
- ✓ Low energy bulbs throughout and LED bulbs in all spotlights
- ✓ Lined curtains (except The Coworth)
- ✓ Pull out bed in lounge
- ✓ Steel pantile roof
- ✓ Hard wired smoke detector
- ✓ Carbon monoxide detector x2
- ✓ Fire extinguisher
- ✓ Fire blanket
- ✓ Escape windows

You can make your ABI even more special by adding further options, see pages 84 & 85.



## Inspiration & design

Our in-house Designers take the latest trends, technical innovations and ABI owners' feedback to create concepts and 3D virtual models for each holiday home's colour scheme, layout and styling.

## Prototype build

Our experienced Engineers faithfully recreate each virtual model, from its layout to the fixtures, in a full-sized prototype so that we can check and perfect every detail before it goes into production.

## Technical detailing

After the prototype has been tried, tested and finalised, our expert Draughting Technicians translate each detail into precise drawings, ensuring your ABI is built to our exacting standards.

## Production build

Our highly skilled, passionate Craft Technicians are the ones who bring these beautiful drawings to life. They make every holiday home by hand, in our workshop in East Yorkshire.

## Quality inspection

Before you can start enjoying your holiday home, our Quality Inspectors will put it through some rigorous tests. Only if it meets our exceptional standards does it get the ABI seal of approval.





Shows Deluxe Pack and optional front sliding door, see page 17

# The Coworth

Rejoice in jollity. The excitement found in the familiarity of a family holiday is beyond compare. Ponder over a puzzle, spend afternoons adventuring or simply enjoy quiet contemplative moments; joy is the only order of the day. Delight in the simple pleasures found in slowing down, switching off and sharing magical moments.





Shows Deluxe Pack, see page 17



Shows Deluxe Pack, see page 17



Shows Deluxe Pack, see page 17



Shows Deluxe Pack, see page 17



Shows Deluxe Pack, see page 17



Shows Deluxe Pack, see page 17

## Made for making memories

Please note: Some items featured in this photography are scene-setting props or optional extras, not included in your purchase. Please speak to your park or dealership or refer to the 'all this included' section for this holiday home.





Shows Deluxe Pack and front sliding door, see page 17

### Highlights:

- Spacious family home
- 2ft 6" single beds in twin room (12ft 2 bedroom models only)
- Option to upgrade to Deluxe Pack



# The Coworth

Ready to settle into your next family break? Take your pick of eight different models and journey towards making wonderful memories.



For more information and to take a virtual tour, visit [www.abiuk.co.uk](http://www.abiuk.co.uk)

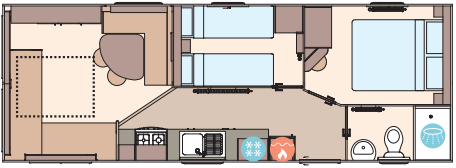
### All this included

- ✓ Matt finish Champagne aluminium cladding
- ✓ Fixed dinette seating
- ✓ Carpet underlay in lounge
- ✓ Scatter cushions in lounge
- ✓ King size bed in master bedroom (except all 10ft models and 32ft x 12ft 2 bedroom model)
- ✓ 2ft 6" single beds in twin room (12ft 2 bedroom models only)
- ✓ Separate en suite (32ft x 12ft models upwards)
- ✓ Crib 5 mattresses to all bedrooms

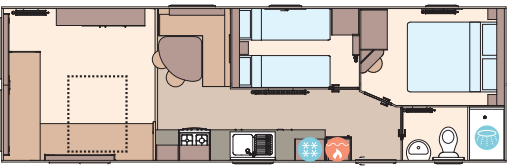
### Add any of these

- ☐ Deluxe Pack (available on 12ft models)
- ☐ Fully galvanised chassis
- ☐ 'Low E' PVCu Thermaglass argon-filled double glazing
- ☐ Integrated microwave oven

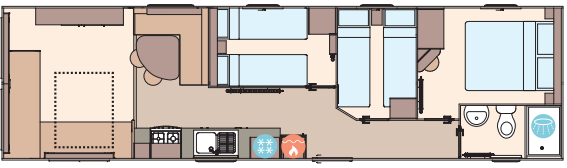
- ☐ Winter premium pack
- ☐ Winter electric pack
- ☐ Front French doors or front sliding door (available on 32ft x 12ft model, both 36ft x 12ft models and 39ft x 12ft model)
- ☐ Free-standing fridge
- ☐ Free-standing or integrated fridge freezer
- ☐ Externally vented powered cooker hood
- ☐ Bathroom extractor fan
- ☐ Lift-up bed in master bedroom
- ☐ Space saver bed for twin room
- ☐ Plain duvet covers and pillowcases
- ☐ Voiles throughout
- ☐ USB socket in lounge



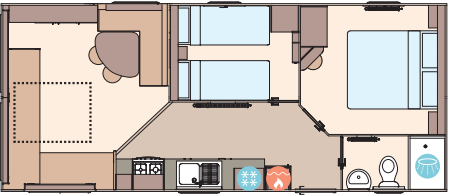
The Coworth 28ft x 10ft x 2 bedroom



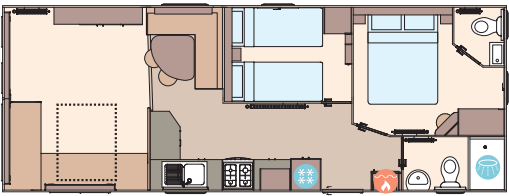
The Coworth 32ft x 10ft x 2 bedroom



The Coworth 36ft x 10ft x 3 bedroom



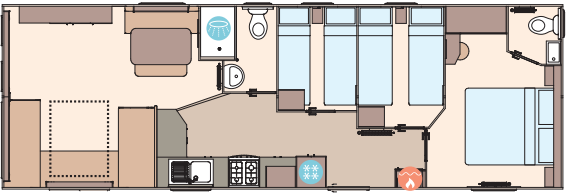
The Coworth 28ft x 12ft x 2 bedroom



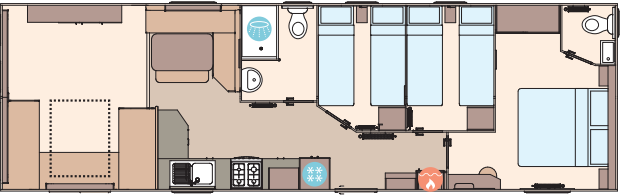
The Coworth 32ft x 12ft x 2 bedroom



The Coworth 36ft x 12ft x 2 bedroom



The Coworth 36ft x 12ft x 3 bedroom



The Coworth 39ft x 12ft x 3 bedroom

KEY: Water heater Shower Fridge/Freezer Front pull out bed

### Included in Deluxe Pack (over standard)

- Fully galvanised chassis
- Curtains on poles
- Carpet underlay throughout
- Upgraded seating including arms and fabric kickboards
- 2 way switching in master bedroom
- Extra sockets in bedrooms
- Full height glass hob splashback
- Integrated microwave oven
- Free-standing fridge freezer
- Bathroom extractor fans
- Externally vented powered cooker hood
- Kitchen upstands
- Wardrobe doors
- Upgraded TV surround
- Feature front canopy and external side cheeks







Shows L-shaped dinette option, see page 23

# The Keswick

Time and grace. Let soft tones soothe the senses and ease you into your holiday haven. Delight in a sumptuous sofa set up that hugs and snugs its way around the room, a charming space for sparkling conversation. Marvel and make the room to revel in. There's always tomorrow, today is about celebrating life at a leisurely pace.





Shows L-shaped dinette option and optional front sliding door, see page 23



### *Stylishly soothing tones*

Please note: Some items featured in this photography are scene-setting props or optional extras, not included in your purchase. Please speak to your park or dealership or refer to the 'all this included' section for this holiday home.



Shows L-shaped dinette option, see page 23







Shows optional front sliding door, see page 23

## Highlights:

- Stylishly designed holiday home for the whole family
- Low energy lighting
- Optional front doors on some models
- Updated colour scheme for 2026



Shows L-shaped dinette option, see page 23

# The Keswick

Embrace open-plan holidaying, with eight different models to choose from. Once inside, you can set the pace as slow as you wish.



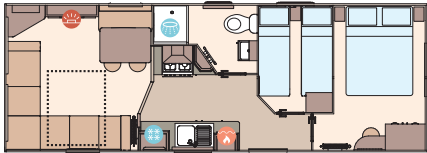
For more information and to take a virtual tour, visit [www.abiuk.co.uk](http://www.abiuk.co.uk)

### All this included

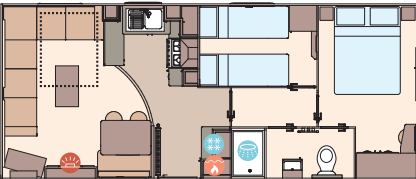
- ✓ Matt finish Champagne aluminium cladding
- ✓ Carpet underlay throughout
- ✓ Electric fire
- ✓ Scatter cushions in lounge
- ✓ Fixed dinette seating
- ✓ Externally vented powered cooker hood
- ✓ Soft-close hinges on doors and drawers in kitchen
- ✓ King size bed in master bedroom (except 28ft models and 36ft/39ft x 12ft 3 bedroom models)
- ✓ Bathroom extractor fans
- ✓ Separate second toilet (32ft x 12ft models and up)
- ✓ USB socket in kitchen
- ✓ Coffee table (in specific models)
- ✓ Fabric headboards to all bedrooms
- ✓ Lift-up bed in master bedroom
- ✓ Crib 5 mattresses to all bedrooms
- ✓ TV point in master bedroom and 1 twin room

### Add any of these

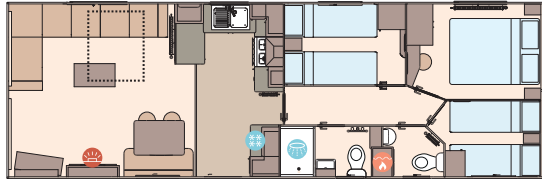
- ☐ Fully galvanised chassis
- ☐ 'Low E' PVCu Thermaglass argon-filled double glazing
- ☐ Winter premium pack
- ☐ Winter electric pack
- ☐ Front French doors or front sliding door (available on 32ft x 12ft model, both 36ft x 12ft models and 39ft x 12ft model)
- ☐ Free-standing dining table and chairs
- ☐ Free-standing fridge
- ☐ Free-standing or integrated fridge freezer
- ☐ Integrated microwave oven
- ☐ L-shaped dinette (specific models)
- ☐ Space saver bed for twin room
- ☐ Plain duvet covers and pillowcases
- ☐ Voiles throughout



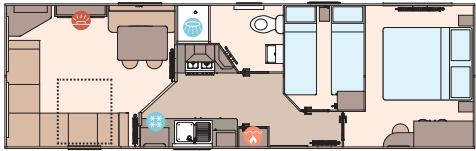
The Keswick 28ft x 10ft x 2 bedroom



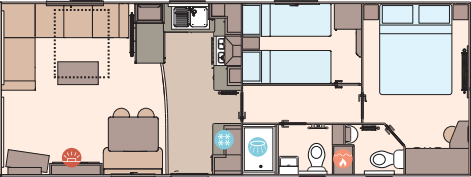
The Keswick 28ft x 12ft x 2 bedroom



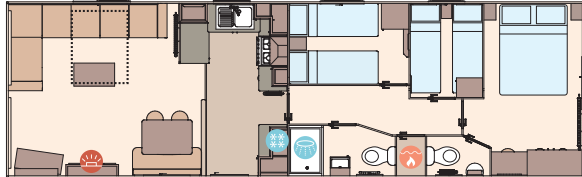
The Keswick 36ft x 12ft x 3 bedroom



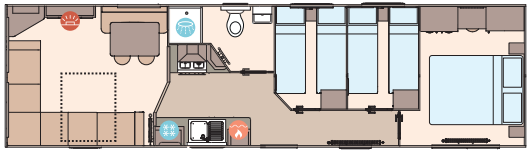
The Keswick 32ft x 10ft x 2 bedroom



The Keswick 32ft x 12ft x 2 bedroom



The Keswick 39ft x 12ft x 3 bedroom



The Keswick 36ft x 10ft x 3 bedroom



The Keswick 36ft x 12ft x 2 bedroom

KEY: Fire Water heater Shower Fridge/Freezer Front pull out bed

OPTIONAL  
WINTER  
PACKS  
See Page 86





# The Wimbledon

A refreshing holiday feel. The open-plan kitchen diner and chaise-style sofa were made for energetic gatherings and get-togethers spent together with pizzazz. Let the inviting colour palette and playful embellishments encourage an abundance of new memories to be made.





Shows optional armchair and optional full front sliding door, see page 29



### *Furnished for family fun*

Please note: Some items featured in this photography are scene-setting props or optional extras, not included in your purchase. Please speak to your park or dealership or refer to the 'all this included' section for this holiday home.



Shows optional armchair and full front sliding door, see page 29







Shows optional full front sliding door, see page 29



### Highlights:

- Wood burner style fireplace
- Beautifully appointed shaker style kitchen
- Optional full front sliding door

# The Wimbledon

A jam-packed holiday is waiting for you. Take your pick of three different layouts and let the fun begin.



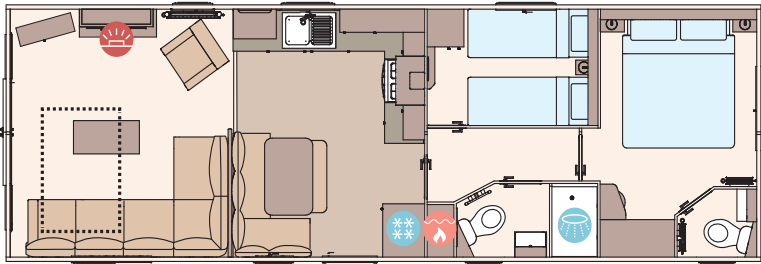
For more information and to take a virtual tour, visit [www.abiuk.co.uk](http://www.abiuk.co.uk)

#### All this included

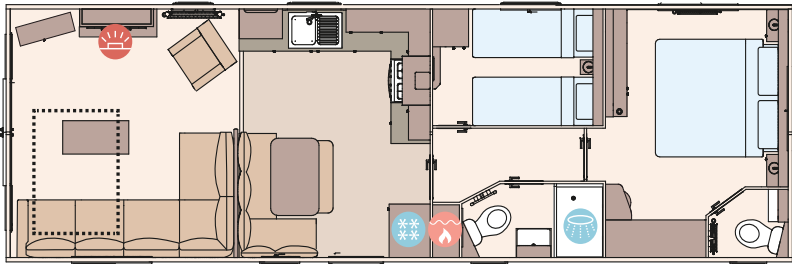
- ✓ Matt finish Champagne aluminium cladding
- ✓ Luxury wood burner style feature fire
- ✓ Carpet underlay throughout
- ✓ Fixed dinette seating
- ✓ Externally vented powered cooker hood
- ✓ 40mm worktops
- ✓ Soft-close hinges on doors and drawers in kitchen
- ✓ Lift-up bed in master bedroom
- ✓ King size bed in master bedroom (2 bedroom models only)
- ✓ TV point in master bedroom and one twin room
- ✓ USB sockets in all bedrooms
- ✓ USB socket in lounge
- ✓ Separate en suite toilet
- ✓ Shaver socket
- ✓ Bathroom extractor fans
- ✓ Hooks in all bathrooms
- ✓ Shaker style kitchen doors
- ✓ Crib 5 mattresses to all bedrooms
- ✓ L-shaped dinette seating
- ✓ Stylish light fittings with low energy bulbs

#### Add any of these

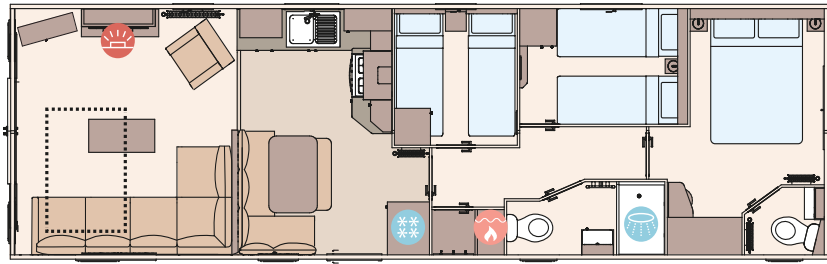
- ☐ Fully galvanised chassis
- ☐ 'Low E' PVCu Thermaglass argon-filled double glazing
- ☐ Winter premium pack
- ☐ Winter electric pack
- ☐ Space saver bed for twin room
- ☐ Free-standing fridge
- ☐ Free-standing or integrated fridge freezer
- ☐ Integrated microwave oven
- ☐ 'Exclusive' pocket sprung mattresses
- ☐ Bluetooth sound system in lounge
- ☐ Scatter cushions in lounge
- ☐ Armchair (in matching dinette seating fabric)
- ☐ Voiles throughout
- ☐ Plain duvet covers and pillowcases
- ☐ Exterior door options available
- ☐ Free-standing dining table and chairs in lieu of fixed L-shaped dinette



The Wimbledon 37ft x 12ft x 2 bedroom



The Wimbledon 39ft x 12ft x 2 bedroom



The Wimbledon 40ft x 12ft x 3 bedroom

#### KEY:

- Fire
- Water heater
- Shower
- Fridge/Freezer
- Front pull out bed

OPTIONAL  
WINTER  
PACKS  
See Page 86





# The St David

Vibrant and refined, this is vivacious, full-of-life vacationing. A contemporary colour pop here, a stylish statement piece there. Every detail is tastefully curated for a breakaway to be enjoyed in style. Pour yourself something refreshing and perfectly chilled, then take in every sumptuous moment spent in surroundings filled with splendour.





### *Styled with sophistication*

Please note: Some items featured in this photography are scene-setting props or optional extras, not included in your purchase. Please speak to your park or dealership or refer to the 'all this included' section for this holiday home.



Shows optional full front sliding door, see page 35





# The St David

Choose from two irresistible layouts, each is expertly crafted for holidays enjoyed in fine style.



For more information and to take a virtual tour, visit [www.abiuk.co.uk](http://www.abiuk.co.uk)

## All this included

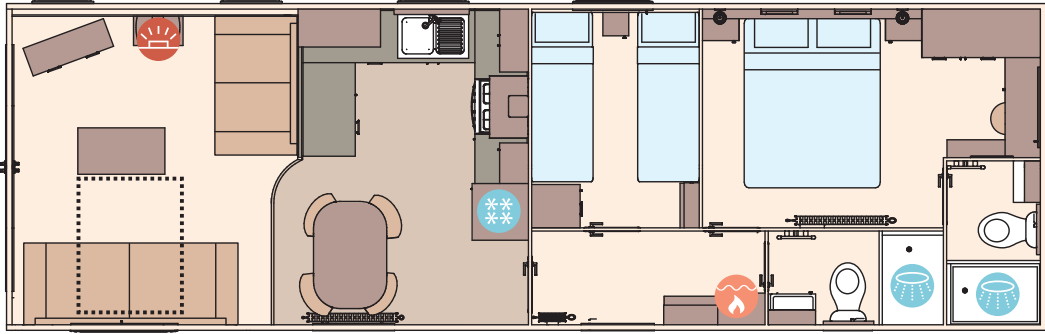
- ✓ Matt finish Champagne aluminium cladding
- ✓ Carpet underlay throughout
- ✓ Stylish light fittings with low energy bulbs
- ✓ Luxury wood burner style feature fire
- ✓ USB socket in lounge
- ✓ Additional sockets next to TV point in lounge
- ✓ Free-standing dining table and chairs
- ✓ Externally vented powered cooker hood
- ✓ 40mm worktops
- ✓ Soft-close hinges on doors and drawers in kitchen
- ✓ Lift-up bed in master bedroom
- ✓ King size bed in master bedroom (2 bedroom model only)
- ✓ TV point in master bedroom and one twin room
- ✓ USB sockets in all bedrooms
- ✓ En suite shower (38ft x 12ft 2 bedroom model only)
- ✓ Bathroom extractor fans
- ✓ Separate en suite toilet
- ✓ Hooks in all bathrooms
- ✓ Composite kitchen sink
- ✓ Coffee table with cube stool
- ✓ Crib 5 mattresses to all bedrooms

## Add any of these

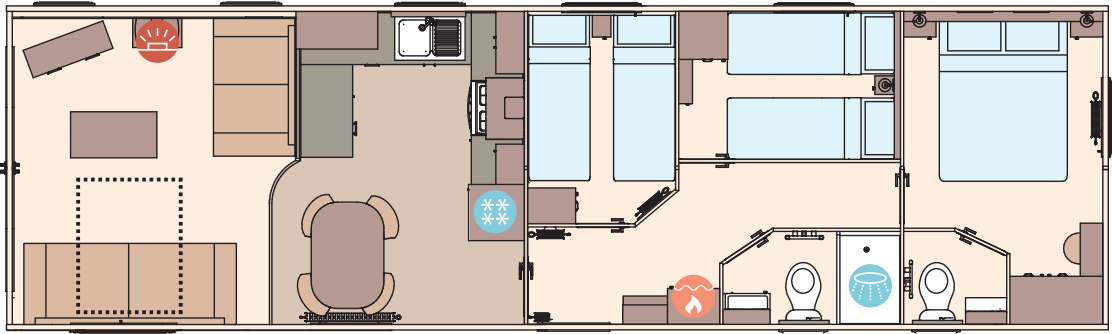
- ☐ Fully galvanised chassis
- ☐ 'Low E' PVCu Thermaglass argon-filled double glazing
- ☐ Winter premium pack
- ☐ Winter electric pack
- ☐ Voiles throughout
- ☐ Free-standing fridge
- ☐ Free-standing or integrated fridge freezer
- ☐ Integrated microwave oven
- ☐ Integrated dishwasher or washing machine
- ☐ Plain duvet covers and pillowcases
- ☐ Scatter cushions in lounge
- ☐ Exterior door options available
- ☐ Bluetooth sound system in lounge
- ☐ 'Exclusive' pocket sprung mattresses
- ☐ Space saver bed (twin room only)

## Highlights:

- Brand new layout and colour scheme for 2026
- Spacious family home
- All models include an en suite toilet
- En suite with shower in the 38ft x 12ft 2 bedroom model
- Home-from-home styling
- New feature fireplace



The St David 38ft x 12ft x 2 bedroom



The St David 40ft x 12ft x 3 bedroom

- KEY:
- Fire
  - Water heater
  - Shower
  - Fridge/Freezer
  - Front pull out bed

OPTIONAL  
WINTER  
PACKS  
See Page 86





# The Beverley

Made for leisure. Let a fresh breeze flow into a bright and airy living area. Share a leisurely lunch or get stuck into a lively afternoon of games. Soft blue hues and delicate floral patterns burst with the glory and gentle grace of the countryside, calming yet full of life. You can feel it in the air, everyone's got that we're-on-holiday buzz now.





### *Enjoy a bright and airy break*

Please note: Some items featured in this photography are scene-setting props or optional extras, not included in your purchase. Please speak to your park or dealership or refer to the 'all this included' section for this holiday home.

Shows optional full front sliding door, see page 41





Shows optional full front sliding door, see page 41



### Highlights:

- Free-standing sofas
- Optional fully glazed front with sliding doors
- En suite with domestic bath (39ft x 12ft 2 bedroom model only)
- Home-from-home comforts throughout
- Contemporary radiator in lounge

# The Beverley

Holiday at your own pace. This stylish holiday home is available in three different layouts, each one made for your leisure.



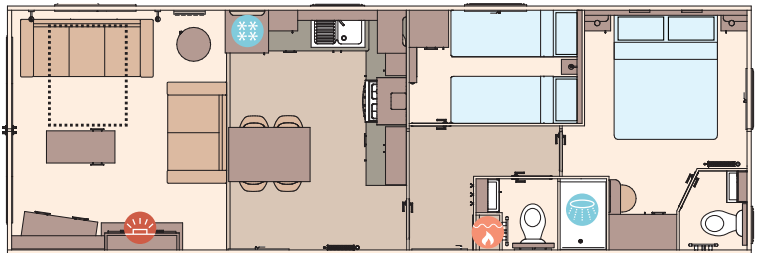
For more information and to take a virtual tour, visit [www.abiuk.co.uk](http://www.abiuk.co.uk)

#### All this included

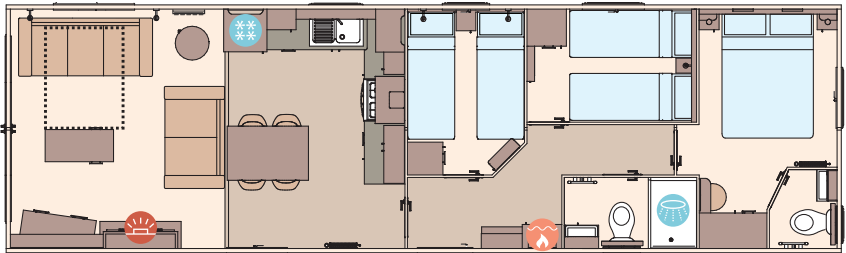
- ✓ Matt finish Chateaux Grey aluminium cladding
- ✓ Carpet underlay throughout
- ✓ Stylish light fittings with low energy bulbs
- ✓ Luxury wood burner style feature fire
- ✓ USB socket in lounge
- ✓ Additional sockets next to TV point in lounge
- ✓ Free-standing dining table and chairs
- ✓ Externally vented powered cooker hood
- ✓ 40mm worktops
- ✓ Soft-close hinges on doors and drawers in kitchen
- ✓ Lift-up bed in master bedroom
- ✓ King size bed in master bedroom (2 bedroom models only)
- ✓ TV point in master bedroom and one twin room
- ✓ USB sockets in all bedrooms
- ✓ En suite with all-in-one GRP bath (39ft x 12ft 2 bedroom only)
- ✓ Shaver socket
- ✓ Bathroom extractor fans
- ✓ Separate en suite toilet
- ✓ Hooks in all bathrooms
- ✓ Composite kitchen sink
- ✓ Pictures above bed in master bedroom
- ✓ Coffee table with cube stool
- ✓ Crib 5 mattresses to all bedrooms

#### Add any of these

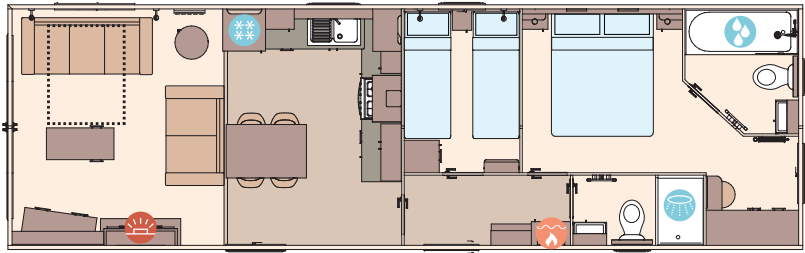
- ☐ Fully galvanised chassis
- ☐ 'Low E' PVCu Thermaglass argon-filled double glazing
- ☐ Winter premium pack
- ☐ Winter electric pack
- ☐ Voiles throughout
- ☐ Free-standing fridge
- ☐ Free-standing or integrated fridge freezer
- ☐ Integrated microwave oven
- ☐ Integrated dishwasher or washing machine
- ☐ Plain duvet covers and pillowcases
- ☐ Bed runner in master bedroom
- ☐ Scatter cushions in lounge
- ☐ Exterior door options available
- ☐ Bluetooth sound system in lounge
- ☐ 'Exclusive' pocket sprung mattresses
- ☐ Space saver bed (twin room only)



The Beverley 36ft x 12ft x 2 bedroom



The Beverley 40ft x 12ft x 3 bedroom



The Beverley 39ft x 12ft x 2 bedroom

#### KEY:

- Fire
- Water heater
- Shower
- Bath
- Fridge/Freezer
- Front pull out bed

OPTIONAL  
WINTER  
PACKS  
See Page 86





# The Derwent

This is accessible holidaying at its finest. Internal sliding doors, wider entrances and lower countertops, every detail is taken care of for enjoyable and restful experiences. From the gentle blue palette to the rich woods that frame the feature fireplace, feel the warmth of the welcome from the moment you arrive.





### *Revel in the detail*

Please note: Some items featured in this photography are scene-setting props or optional extras, not included in your purchase. Please speak to your park or dealership or refer to the 'all this included' section for this holiday home.







Shows optional front French door, see page 47

# The Derwent



Cleverly designed with accessible holidaying in mind, full of carefully considered features, this holiday home makes relaxation easy for everyone.



For more information and to take a virtual tour, visit [www.abiuk.co.uk](http://www.abiuk.co.uk)

### All this included

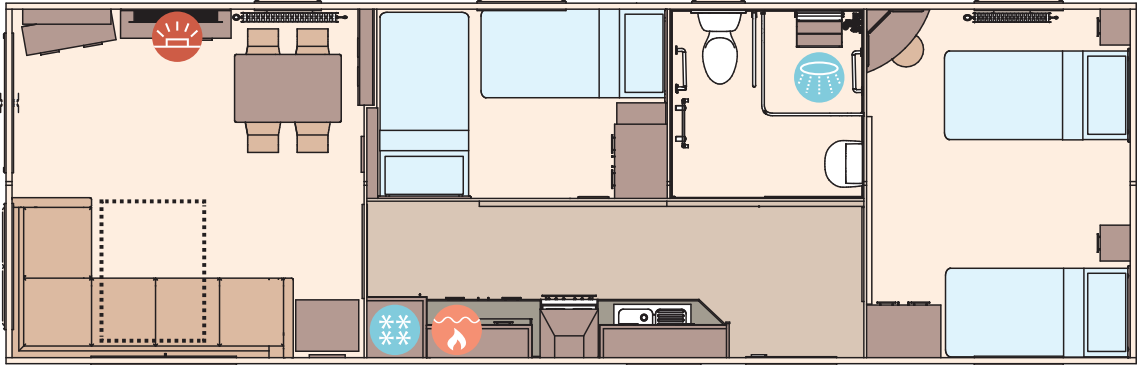
- ✓ Matt finish Champagne aluminium cladding
- ✓ Carpet underlay throughout
- ✓ Sliding internal doors
- ✓ Separate lounge and kitchen
- ✓ Electric fire
- ✓ Scatter cushions in lounge
- ✓ USB socket in lounge
- ✓ Free-standing dining table and chairs
- ✓ Soft-close hinges on doors and drawers in kitchen
- ✓ Externally vented powered cooker hood
- ✓ Lowered base units in kitchen
- ✓ 3ft divan beds in master bedroom which can convert to a 6ft wide bed
- ✓ TV point in master bedroom
- ✓ Free-standing patient helper apparatus in master bedroom
- ✓ USB sockets in all bedrooms
- ✓ Wet room bathroom with Doc M disability equipment
- ✓ Bathroom extractor fan
- ✓ Widened entrance for wheelchair access
- ✓ Pictures in lounge
- ✓ Crib 5 mattresses to all bedrooms

### Add any of these

- ☐ Fully galvanised chassis
- ☐ 'Low E' PVCu Thermaglass argon-filled double glazing
- ☐ Winter premium pack
- ☐ Winter electric pack
- ☐ Voiles throughout
- ☐ Integrated microwave oven
- ☐ Integrated fridge freezer
- ☐ Plain duvet covers and pillowcases
- ☐ Standard height base units in kitchen
- ☐ Front French door
- ☐ Fixed track system patient helper in lieu of free-standing apparatus

## Highlights:

- Optional front French door available
- Full accessibility with wider door frames throughout
- 3ft divan beds in master bedroom



The Derwent 38ft x 12ft x 2 bedroom

KEY: Fire Water heater Shower Fridge/Freezer Front pull out bed

OPTIONAL  
WINTER  
PACKS  
See Page 86





# The Windermere

Sink into an easy come, easy flow way of life. Restore calm in this home-from-home hideaway. Royal blue accents meander throughout, from the spacious, well-equipped kitchen, to the welcoming glow of the bedside lighting. Every detail is crafted for your comfort.





*Ready to holiday homely?*

Please note: Some items featured in this photography are scene-setting props or optional extras, not included in your purchase. Please speak to your park or dealership or refer to the 'all this included' section for this holiday home.



Shows optional full front sliding door, see page 53







Shows optional full front sliding door, see page 53

Highlights:

- Luxury living in 12ft and 13ft wide holiday home
- En suite with shower in the 40ft x 12ft/13ft 2 bedroom models
- Free-standing domestic-style sofas
- Spacious and contemporary kitchen with larder unit
- Option to upgrade to BS3632 residential specification on 13ft models



The Windermere

Thoughtfully designed with the simplicity and comfort of home in mind, this holiday home is available in four different layouts. Choose the model that suits you.



For more information and to take a virtual tour, visit [www.abiuk.co.uk](http://www.abiuk.co.uk)

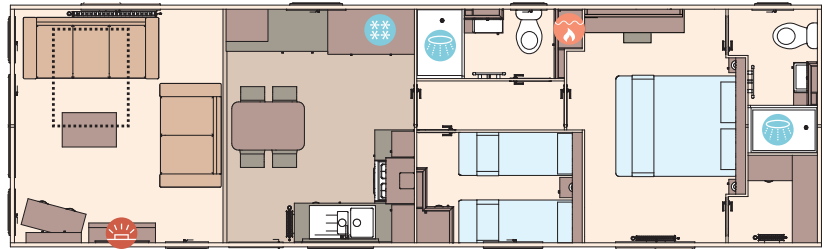
All this included

- ✓ Matt finish Champagne aluminium cladding
- ✓ Carpet underlay throughout
- ✓ Scatter cushions in lounge
- ✓ Luxury wood burner style feature fire
- ✓ USB socket in lounge
- ✓ Additional sockets next to TV point in lounge
- ✓ Free-standing dining table and chairs
- ✓ Externally vented powered cooker hood
- ✓ Integrated fridge freezer
- ✓ 40mm worktops
- ✓ Soft-close hinges on doors and drawers in kitchen
- ✓ Lift-up bed in master bedroom
- ✓ King size bed in master bedroom (except 40ft x 12ft 3 bed model)
- ✓ TV point in master bedroom and one twin room
- ✓ Plain duvet covers and pillowcases
- ✓ Bed runner and scatter cushions on all beds
- ✓ USB sockets in all bedrooms
- ✓ Shaver socket
- ✓ Bathroom extractor fans
- ✓ Hooks in all bathrooms
- ✓ Composite kitchen sink
- ✓ Separate second toilet (3 bedroom models only)

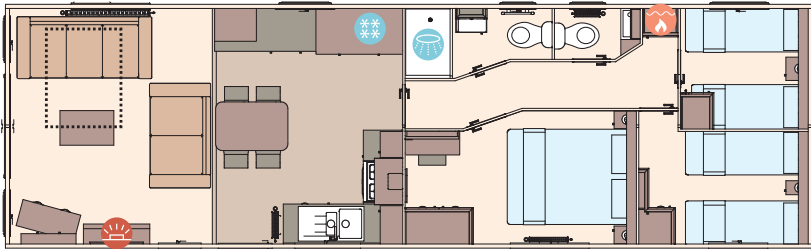
- ✓ Separate en suite shower and toilet (2 bedroom models only)
- ✓ Voiles throughout
- ✓ Additional storage in walk-in robe area in master bedroom (2 bedroom models only)
- ✓ Kitchen larder unit with spice racks
- ✓ Crib 5 mattresses to all bedrooms

Add any of these

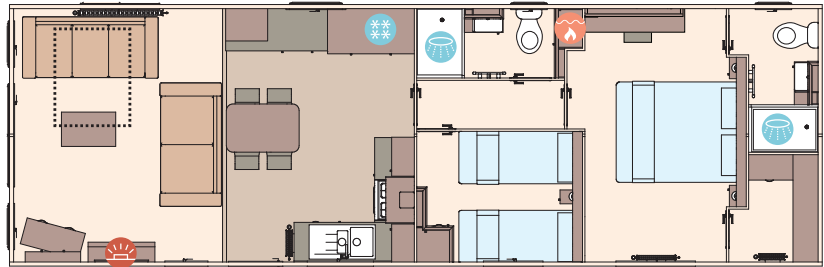
- ☐ Residential specification BS3632 (available on 13ft models only)
- ☐ Fully galvanised chassis
- ☐ 'Low E' PVCu Thermaglass argon-filled double glazing
- ☐ Winter premium pack
- ☐ Winter electric pack
- ☐ Exterior door options available
- ☐ Integrated microwave oven
- ☐ Integrated dishwasher
- ☐ Integrated washing machine
- ☐ Bluetooth sound system in lounge
- ☐ 'Exclusive' pocket sprung mattresses
- ☐ Space saver bed (twin room only)



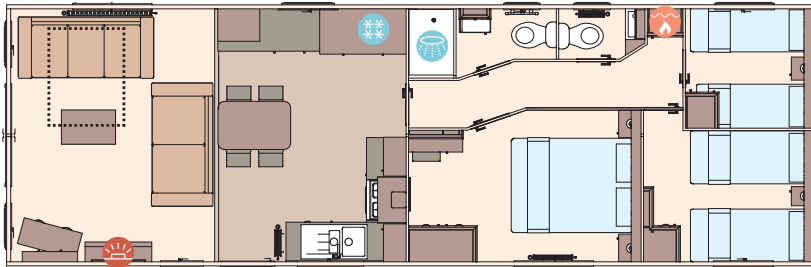
The Windermere 40ft x 12ft x 2 bedroom



The Windermere 40ft x 12ft x 3 bedroom



The Windermere Residential 40ft x 13ft x 2 bedroom



The Windermere Residential 40ft x 13ft x 3 bedroom

KEY: Fire Water heater Shower Fridge/Freezer Front pull out bed

OPTIONAL  
Residential  
specification  
BS3632  
See Page 86

OPTIONAL  
WINTER  
PACKS  
See Page 86





Shows optional internal capping (Residential spec only), see page 59

# The Ingleton

Relaxation refined. Let keen eyes settle on sophisticated style notes that provide subtle hints of the elegant ambience you're about to reside in. Pamper in plush textures, sleek features and modern finishes, within the chicest of spaces that just oozes elegance and calm.





Shows optional internal capping (Residential spec only), see page 59



Shows optional internal capping (Residential spec only), see page 59

## *Elegant ambience abounds*

Please note: Some items featured in this photography are scene-setting props or optional extras, not included in your purchase. Please speak to your park or dealership or refer to the 'all this included' section for this holiday home.



Shows optional internal capping (Residential spec only), see page 59



Shows optional internal capping (Residential spec only), see page 59



Shows optional internal capping (Residential spec only), see page 59



Shows optional internal capping (Residential spec only), see page 59





# The Ingleton

If this holiday home's chic style is for you, there's only one decision left. Which of the two elegant layouts will you choose?



For more information and to take a virtual tour, visit [www.abiuk.co.uk](http://www.abiuk.co.uk)

**All this included**

- ✓ Matt finish Chateaux Grey aluminium cladding
- ✓ Pre-galvanised twin axle chassis
- ✓ White 'Low E' PVCu Thermaglass argon-filled double glazing
- ✓ Fully condensing boiler gas central heating
- ✓ Free-standing dining table and 4 chairs
- ✓ Breakfast bar
- ✓ Breakfast style stools
- ✓ Satellite co-ax
- ✓ USB socket in lounge
- ✓ Scatter cushions in lounge
- ✓ Soft-close hinges on doors and drawers in kitchen
- ✓ 40mm worktops
- ✓ Integrated fridge freezer
- ✓ Externally vented powered cooker hood
- ✓ Lift-up bed in master bedroom
- ✓ TV point in all bedrooms
- ✓ USB sockets in all bedrooms
- ✓ King size bed in master bedroom (2 bedroom model only)
- ✓ Separate en suite toilet and shower in all models
- ✓ Bathroom extractor fans

- ✓ Shaver socket
- ✓ Additional sockets next to TV point in lounge
- ✓ Hooks in all bathrooms
- ✓ Composite kitchen sink
- ✓ Full front sliding door
- ✓ Crib 5 mattresses to all bedrooms
- ✓ Contemporary radiator in lounge

**Add any of these**

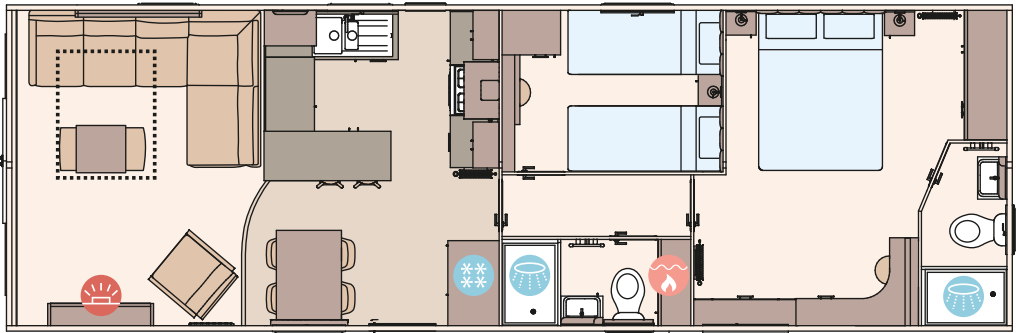
- ☐ Residential specification BS3632
- ☐ Deluxe Bluetooth sound system
- ☐ 'Exclusive' pocket sprung mattresses
- ☐ Space saver bed for twin room
- ☐ Integrated washing machine
- ☐ Integrated dishwasher
- ☐ Integrated microwave oven
- ☐ Fully galvanised chassis
- ☐ CanExel™ exterior cladding
- ☐ Upgrade to Graphite Grey windows with matching internal capping (available on BS3632 upgrade)
- ☐ Voiles throughout

## Highlights:

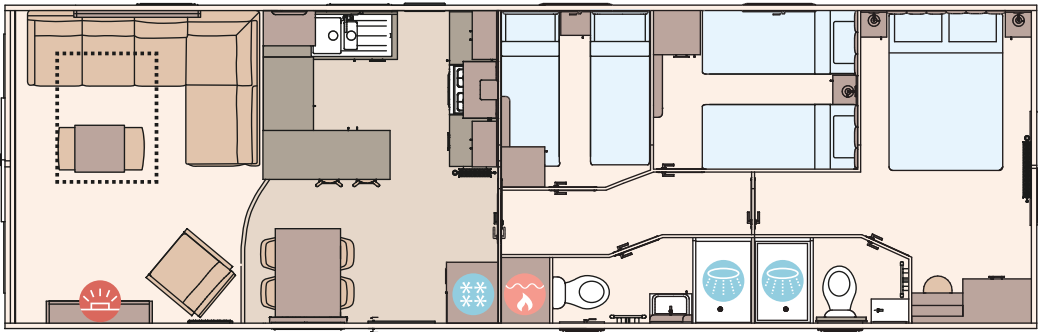
- Feature fireplace in lounge
- Open-plan family holiday home with breakfast bar
- Option to upgrade to BS3632 residential specification



Shows optional internal capping (Residential spec only), see page 59



The Ingleton 40ft x 13ft x 2 bedroom



The Ingleton 41ft x 13ft x 3 bedroom

- KEY:
- Fire
  - Water heater
  - Shower
  - Fridge/Freezer
  - Front pull out bed

OPTIONAL  
Residential  
specification  
BS3632  
See Page 86

OPTIONAL  
WINTER  
PACKS  
See Page 86





# The Langdale

A natural break. Feel the call of the cuddle chair and curl up in comfort. Let bare feet pad around in softness and serenity, where forest-feel tones make it all too easy to nestle down. Find grounding in the glow of the new wood-burning fireplace, and soak up the quiet energy of the outdoors through windows that frame every view from crisp mornings to dusky evenings. And breathe.





### *Soft, serene surroundings*

Please note: Some items featured in this photography are scene-setting props or optional extras, not included in your purchase. Please speak to your park or dealership or refer to the 'all this included' section for this holiday home.





# The Langdale

Immerse yourself in nature's own replenishing tones. Choose from two bedrooms or three to suit your brood.

For external CanExel™ Cladding option please visit [www.abiuk.co.uk](http://www.abiuk.co.uk)



For more information and to take a virtual tour, visit [www.abiuk.co.uk](http://www.abiuk.co.uk)

## All this included

- ✓ Matt finish Champagne aluminium cladding
- ✓ Pre-galvanised twin axle chassis
- ✓ White 'Low E' PVCu Thermaglass argon-filled double glazing
- ✓ Fully condensing boiler gas central heating
- ✓ Luxury wood burner style feature fire
- ✓ Carpet underlay throughout
- ✓ Free-standing dining table and chairs
- ✓ Satellite co-ax
- ✓ USB socket in lounge
- ✓ Scatter cushions in lounge
- ✓ Voiles throughout
- ✓ Soft-close hinges on doors and drawers in kitchen
- ✓ Luxury integrated electric oven and separate gas 5 burner hob
- ✓ 40mm worktops
- ✓ Integrated fridge freezer
- ✓ Externally vented powered cooker hood
- ✓ Lift-up bed in master bedroom
- ✓ TV point in all bedrooms
- ✓ USB sockets in all bedrooms
- ✓ King size bed in master bedroom (2 bedroom model only)

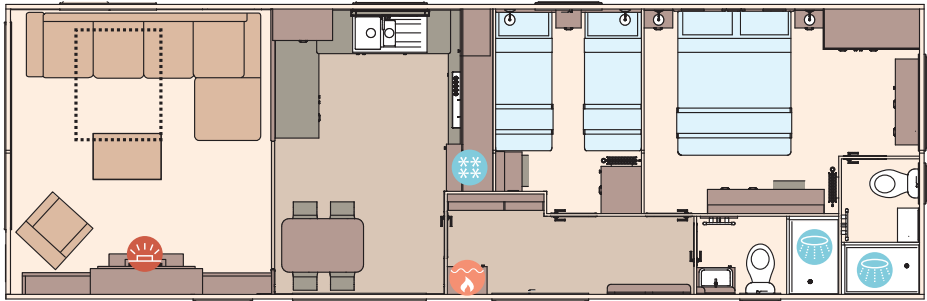
- ✓ Composite kitchen sink
- ✓ Plain duvet covers and pillowcases
- ✓ Bed runners and scatter cushions on all beds
- ✓ En suite shower (2 bedroom model only)
- ✓ En suite toilet
- ✓ Bathroom extractor fans
- ✓ Shaver socket
- ✓ Additional sockets next to TV point in lounge
- ✓ Hooks in all bathrooms
- ✓ Entrance hall and cloakroom
- ✓ Stylish pictures throughout
- ✓ Full front sliding door
- ✓ Crib 5 mattresses to all bedrooms

## Add any of these

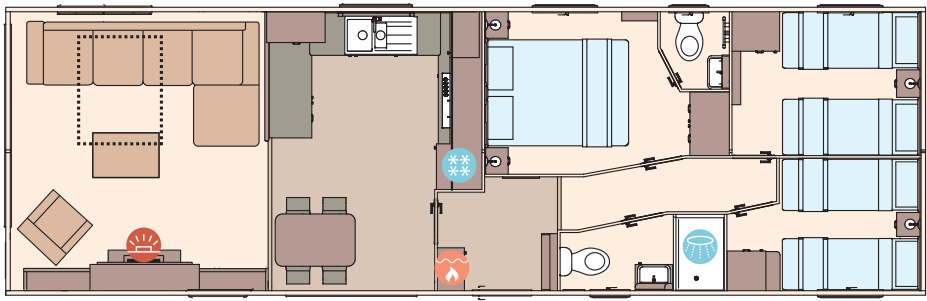
- ☐ Residential specification BS3632
- ☐ Deluxe Bluetooth sound system
- ☐ 'Exclusive' pocket sprung mattresses
- ☐ Space saver bed for twin room
- ☐ Integrated washing machine
- ☐ Integrated dishwasher
- ☐ Integrated microwave oven
- ☐ Fully galvanised chassis
- ☐ CanExel™ exterior cladding
- ☐ Vinyl flooring in lounge in lieu of carpet

## Highlights:

- Updated colour scheme for 2026
- Wood burner style fireplace
- Free-standing domestic style seats
- Modern spacious kitchen



The Langdale 40ft x 13ft x 2 bedroom



The Langdale 41ft x 13ft x 3 bedroom

## KEY:

- Fire
- Water heater
- Shower
- Fridge/Freezer
- Front pull out bed

OPTIONAL  
Residential  
specification  
BS3632  
See Page 86





Shows optional VELUX® rooflight, see page 71

# The Ambleside

Bask in the glow of the morning, whether it's golden leaves or dawn light outside. Take an exploratory amble, then retire for a restful and restorative lounge, sinking into the softness of a peaceful afternoon and just let the day drift by. Sumptuous comfort awaits between the cuddle of cushions and duvets with delectable dive-ability. Take extra time out in the hush of tomorrow morning and hunker down just a little further.





## Slip into sumptuous comfort

Please note: Some items featured in this photography are scene-setting props or optional extras, not included in your purchase. Please speak to your park or dealership or refer to the 'all this included' section for this holiday home.





Shows optional full front sliding door, see page 71

# The Ambleside

No matter which of the four different models is for you, you'll savour lazy days steeped in peaceful tranquillity.

For external CanExel™ Cladding option please visit [www.abiuk.co.uk](http://www.abiuk.co.uk)



For more information and to take a virtual tour, visit [www.abiuk.co.uk](http://www.abiuk.co.uk)

### All this included

- ✓ Matt finish Chateaux Grey aluminium cladding
- ✓ Pre-galvanised twin axle chassis
- ✓ Graphite Grey 'Low E' PVCu Thermaglass argon-filled double glazing
- ✓ Front French doors
- ✓ Fully condensing boiler gas central heating
- ✓ Luxury wood burner style feature fire
- ✓ Carpet underlay throughout
- ✓ Free-standing dining table and chairs
- ✓ Upholstered footstool
- ✓ Satellite co-ax
- ✓ USB socket in lounge
- ✓ Scatter cushions in lounge
- ✓ Voiles throughout
- ✓ Soft-close drawers throughout
- ✓ Luxury integrated electric oven and separate gas 5 burner hob
- ✓ 40mm worktops
- ✓ Integrated fridge freezer
- ✓ Externally vented powered cooker hood
- ✓ Lift-up bed in master bedroom
- ✓ TV point in all bedrooms
- ✓ USB sockets in all bedrooms (includes USB sockets on both sides of the main bed)
- ✓ King size bed in master bedroom (2 bedroom models only)
- ✓ Plain duvet covers and pillowcases
- ✓ Bed runners and scatter cushions on all beds
- ✓ Separate en suite toilet and shower
- ✓ Bathroom extractor fans

- ✓ Shaver socket
- ✓ Hooks in all bathrooms
- ✓ Entrance hall
- ✓ Composite kitchen sink
- ✓ Wicker storage baskets in kitchen
- ✓ Wall lighting in lounge
- ✓ Crib 5 mattresses to all bedrooms

### Add any of these

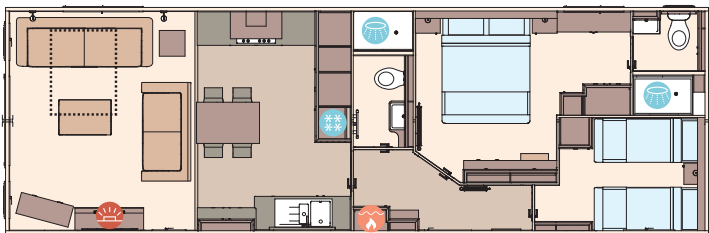
- ☐ Premier Pack
- ☐ Residential specification BS3632
- ☐ 'Exclusive' pocket sprung mattresses
- ☐ Integrated dishwasher
- ☐ Integrated washing machine
- ☐ Integrated microwave oven
- ☐ Fully galvanised chassis
- ☐ Deluxe Bluetooth sound system
- ☐ Second bedroom as double instead of twin, bed includes lift-up storage (Premier model)
- ☐ CanExel™ exterior cladding
- ☐ Space saver bed in twin room
- ☐ Additional window in lounge nearside corner
- ☐ Full front sliding door in lieu of front French doors
- ☐ VELUX® rooflight window to kitchen

### The Ambleside Premier Pack

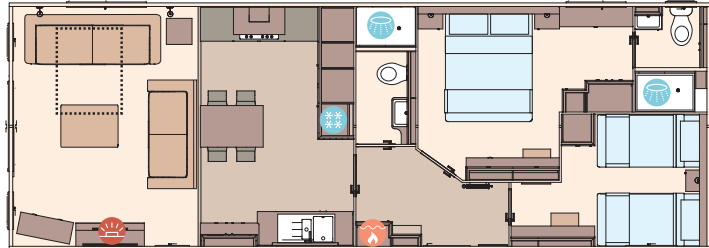
- ✓ Chateaux Grey hard PVCu cladding
- ✓ 14ft wide
- ✓ Larger sofa
- ✓ 3ft beds in twin room
- ✓ Dressing table with stool in twin room (2 bedroom model only)

## Highlights:

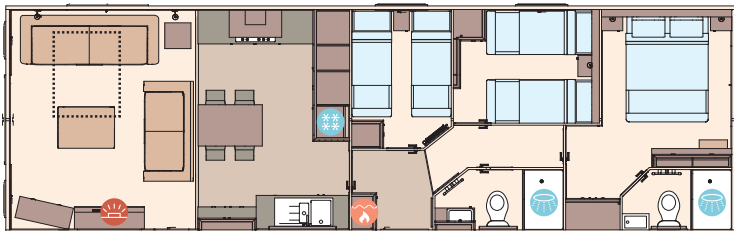
- Stunning kitchen with integrated appliances
- Home-from-home styling
- 14ft Premier Pack available providing more space and double bed option in twin room
- Large, comfortable free-standing sofas
- En suite shower
- Optional panoramic sliding doors



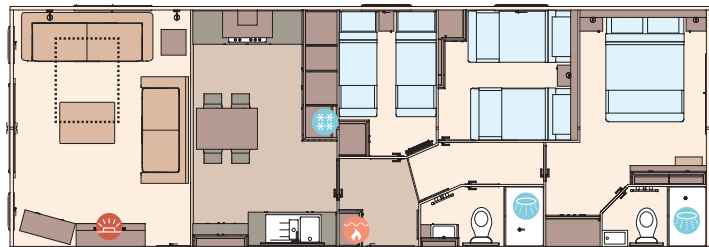
The Ambleside 40ft x 13ft x 2 bedroom



The Ambleside Premier 40ft x 14ft x 2 bedroom



The Ambleside 41ft x 13ft x 3 bedroom



The Ambleside Premier 41ft x 14ft x 3 bedroom

KEY: Fire Water heater Shower Fridge/Freezer Front pull out bed

OPTIONAL  
Residential  
specification  
BS3632  
See Page 86





# The Balmoral

Entertain in grand surroundings. Lose yourself in the irresistible luxe of an indulgent living space, where fine dining and gregarious gatherings can last long into starry-filled nights. Or find sanctuary in the impossible-to-resist lure of hotel-suite style bathrooms, adorned with new royal blue feature tiles. Give in to the temptation of sinking into getting-away-from-it-all escapism, waiting to be discovered at every turn.





### *Irresistible luxury living*

Please note: Some items featured in this photography are scene-setting props or optional extras, not included in your purchase. Please speak to your park or dealership or refer to the 'all this included' section for this holiday home.





# The Balmoral

Looking for delightful details on a grand scale? Choose from two exceptional holiday home layouts, each one is fit for a king.

For external CanExel™ Cladding option please visit [www.abiuk.co.uk](http://www.abiuk.co.uk)



For more information and to take a virtual tour, visit [www.abiuk.co.uk](http://www.abiuk.co.uk)

## All this included

- ✓ Fully galvanised heavy-duty chassis
- ✓ Chateaux Grey PVCu cladding
- ✓ Front sliding patio doors
- ✓ White 'Low E' PVCu Thermaglass argon-filled double glazing
- ✓ Carpet underlay throughout
- ✓ Fully condensing boiler gas central heating
- ✓ Stylish domestic sofas
- ✓ Upholstered footstool
- ✓ Free-standing dining table and 4 chairs
- ✓ Scatter cushions in lounge
- ✓ USB socket in lounge
- ✓ Satellite co-ax
- ✓ Additional sockets next to TV point in lounge
- ✓ 5 burner gas hob including wok burner
- ✓ Composite kitchen sink
- ✓ Free-standing American-style fridge freezer
- ✓ Integrated dishwasher
- ✓ Integrated microwave oven
- ✓ Externally vented powered cooker hood
- ✓ Soft-close hinges on doors and drawers throughout
- ✓ Lift-up bed in master bedroom
- ✓ King size bed in master bedroom
- ✓ Plain duvet covers and pillowcases
- ✓ Bed runners and scatter cushions on all beds
- ✓ USB sockets in all bedrooms (includes USB sockets

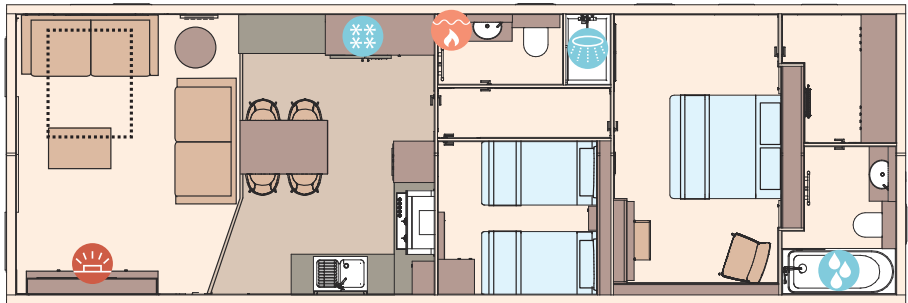
- to both sides of the main bed)
- ✓ TV point in all bedrooms
- ✓ Luxury en suite with all-in-one GRP bath
- ✓ Bathroom extractor fans
- ✓ Shaver socket
- ✓ Hooks in all bathrooms
- ✓ Wicker storage baskets in kitchen
- ✓ Stylish round and oval mirrors in all bedrooms, bathroom and en suite
- ✓ Crib 5 mattresses to all bedrooms
- ✓ High quality internal door frames and doors

## Add any of these

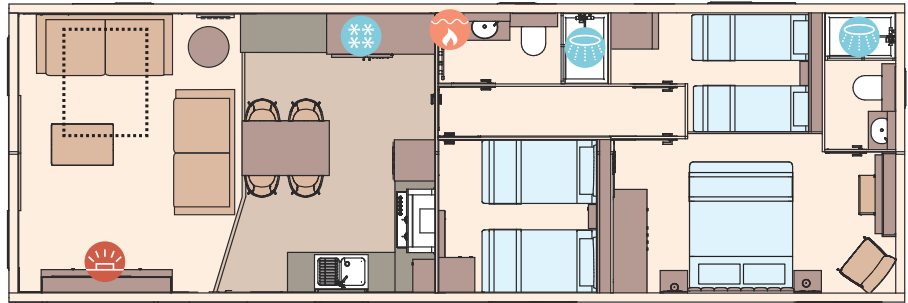
- ☐ Residential specification BS3632
- ☐ Deluxe Bluetooth sound system
- ☐ Deluxe NEFF appliances including microwave, oven and hob and extractor hood
- ☐ 'Exclusive' pocket sprung mattresses
- ☐ Space saver bed for twin room
- ☐ Integrated washing machine

## Highlights:

- Opulent feature window
- Optional deluxe NEFF kitchen appliances
- Natural contemporary feature slatted wall panelling
- Bathroom with all-in-one GRP bath



The Balmoral 43ft x 14ft x 2 bedroom



The Balmoral 43ft x 14ft x 3 bedroom

## KEY:

- Fire
- Water heater
- Shower
- Bath
- Fridge/Freezer
- Front pull out bed

OPTIONAL  
Residential  
specification  
BS3632  
See Page 86

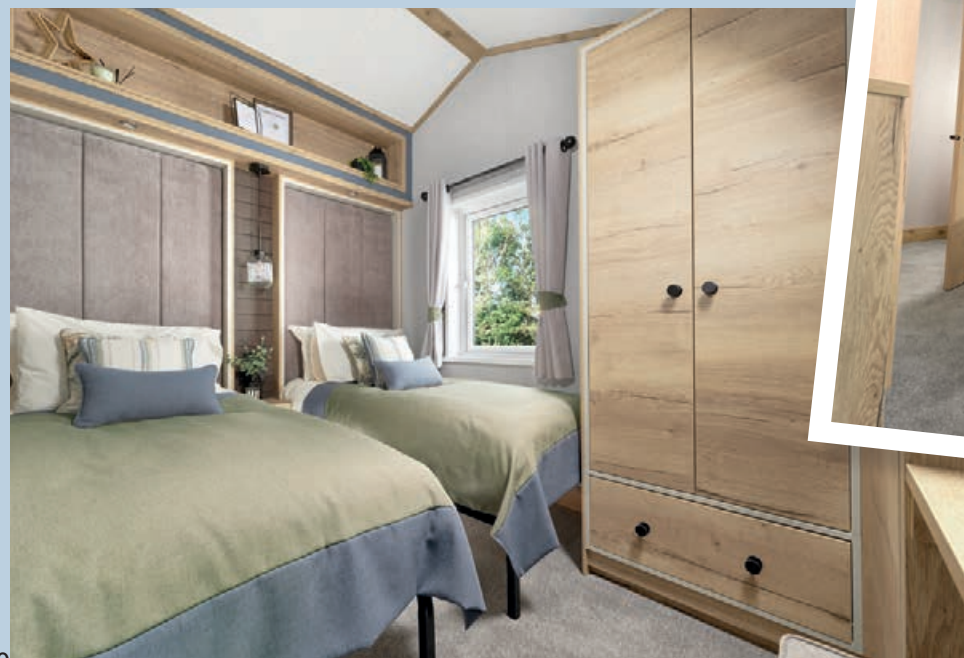




# The Westwood Lodge

Bathe in the delicate dance of morning light as you set the tone of the day from the new breakfast bar. The sunniest mornings begin with golden beams spilling through the floor-to-ceiling feature window, casting warmth across the living space. Let yourself move with the gentle rhythm of the day, where majestic views shine brighter, simply because there's nothing to do but luxuriate.





### *Grandeur from the ground up*

Please note: Some items featured in this photography are scene-setting props or optional extras, not included in your purchase. Please speak to your park or dealership or refer to the 'all this included' section for this holiday home.







# The Westwood Lodge

Do holiday homes come any better?  
Discover all the finer details this sophisticated showstopper includes to help you holiday in style.

For external CanExel™ Cladding option, please visit [www.abiuk.co.uk](http://www.abiuk.co.uk)



For more information and to take a virtual tour, visit [www.abiuk.co.uk](http://www.abiuk.co.uk)

### All this included

- ✓ Chateaux Grey hard PVCu cladding
- ✓ Fully galvanised heavy-duty chassis
- ✓ Full front sliding door
- ✓ ClimaGuard 'Low E' PVCu argon-filled double glazing fitted to all doors and windows
- ✓ Carpet underlay throughout
- ✓ Fully condensing boiler gas central heating
- ✓ Luxury wood burner style feature fire
- ✓ Free-standing domestic style furniture
- ✓ Scatter cushions in lounge
- ✓ Free-standing dining table and 6 chairs
- ✓ USB socket in lounge
- ✓ Satellite co-ax
- ✓ Integrated fridge freezer
- ✓ Integrated dishwasher
- ✓ Integrated microwave oven
- ✓ Externally vented powered cooker hood
- ✓ 5 burner gas hob including wok burner
- ✓ Composite kitchen sink
- ✓ Soft-close hinges on doors and drawers throughout
- ✓ Slate effect 25mm kitchen worktops
- ✓ King size bed in master bedroom
- ✓ Lift-up bed in master bedroom
- ✓ 3ft single beds
- ✓ Plain duvet covers and pillowcases
- ✓ Bed throws and scatter cushions on all beds
- ✓ USB sockets in all bedrooms (includes USB sockets on both sides of the main bed)
- ✓ TV point in all bedrooms
- ✓ Separate en suite shower and toilet
- ✓ Bathroom extractor fans

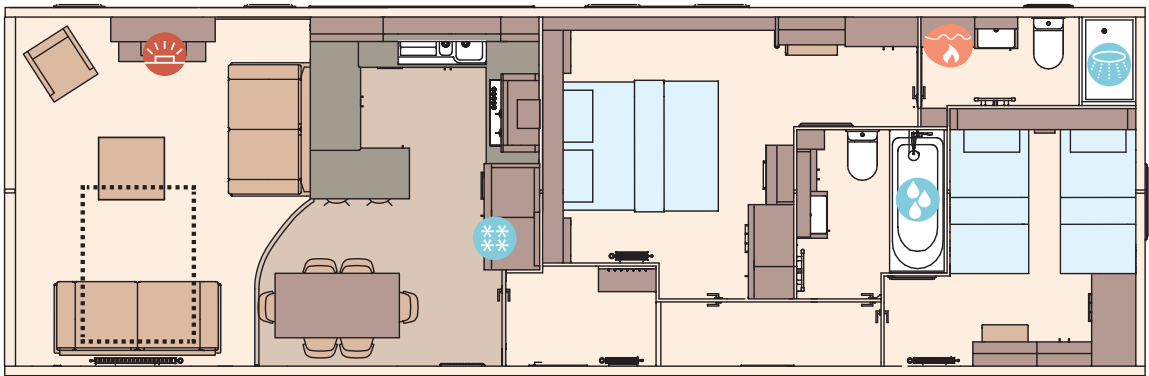
- ✓ Bathroom with all-in-one GRP bath
- ✓ Shaver socket
- ✓ Luxury soft-close toilets
- ✓ Hooks in all bathrooms and master bedroom
- ✓ Entrance hall and cloakroom
- ✓ Pictures in hallway and bathroom
- ✓ VELUX® rooflight window in kitchen
- ✓ Corner pull-out shelving unit in kitchen
- ✓ Wine cooler in kitchen
- ✓ Stylish wall lights in lounge
- ✓ Feature fireplace with wooden beam
- ✓ Feature wood panelling walls in lounge and master bedroom
- ✓ Architectural external roof panels
- ✓ Contemporary radiator in lounge
- ✓ Crib 5 mattresses to all bedrooms
- ✓ High quality internal door frames and doors
- ✓ TV facility in lounge above fireplace in lieu of mirror

### Add any of these

- ☐ Deluxe Bluetooth sound system
- ☐ 'Exclusive' pocket sprung mattresses
- ☐ Space saver bed for twin room
- ☐ Integrated washing machine
- ☐ CanExel™ exterior cladding (available in D5 Ridgewood or Ced-R-Vue styles)
- ☐ Deluxe NEFF appliances including microwave, oven and hob and extractor hood

### Highlights:

- Sumptuous master bedroom with dressing area and en suite shower
- Spacious twin room with 3ft beds
- Luxury kitchen
- The ultimate in holiday homes
- Built to BS3632 residential specification
- Contemporary styling throughout
- Fully glazed front with sliding door



The Westwood Lodge 44ft x 14ft x 2 bedroom

KEY: Fire Water heater Shower Bath Fridge/Freezer Front pull out bed



MODEL SPECIFICATIONS AND OPTIONS

☒ Standard ☐ Optional ☐ Not available

		THE COWORTH								THE KESWICK								THE WIMBLEDON		
		28' X 10' 2 BED	32' X 10' 2 BED	36' X 10' 3 BED	28' X 12' 2 BED	32' X 12' 2 BED	36' X 12' 2 BED	36' X 12' 3 BED	39' X 12' 3 BED	28' X 10' 2 BED	32' X 10' 2 BED	36' X 10' 3 BED	28' X 12' 2 BED	32' X 12' 2 BED	36' X 12' 2 BED	36' X 12' 3 BED	39' X 12' 3 BED	37' X 12' 2 BED	39' X 12' 2 BED	40' X 12' 3 BED
EXTERIOR	PAINTED CHASSIS	✓	✓	✓	✓	✓	✓	✓	✓	✓	✓	✓	✓	✓	✓	✓	✓	✓	✓	✓
	PRE-GALVANISED CHASSIS	✗	✗	✗	✗	✗	✗	✗	✗	✗	✗	✗	✗	✗	✗	✗	✗	✗	✗	✗
	FULLY GALVANISED CHASSIS	○	○	○	○	○	○	○	○	○	○	○	○	○	○	○	○	○	○	○
	FULLY GALVANISED HEAVY DUTY 'I' BEAM CHASSIS	✗	✗	✗	✗	✗	✗	✗	✗	✗	✗	✗	✗	✗	✗	✗	✗	✗	✗	✗
	PVCu CLADDING	✗	✗	✗	✗	✗	✗	✗	✗	✗	✗	✗	✗	✗	✗	✗	✗	✗	✗	✗
	CANEXEL™ CLADDING	✗	✗	✗	✗	✗	✗	✗	✗	✗	✗	✗	✗	✗	✗	✗	✗	✗	✗	✗
	UPGRADED EXTERNAL WALLS	✗	✗	✗	✗	✗	✗	✗	✗	✓	✓	✓	✓	✓	✓	✓	✓	✓	✓	✓
	FRONT FRENCH DOOR	✗	✗	✗	✗	○	○	○	○	✗	✗	✗	✗	○	○	○	○	✗	✗	✗
	FRONT SLIDING DOOR	✗	✗	✗	✗	○	○	○	○	✗	✗	✗	✗	○	○	○	○	✗	✗	✗
	FULL FRONT SLIDING DOOR	✗	✗	✗	✗	✗	✗	✗	✗	✗	✗	✗	✗	✗	✗	✗	✗	○	○	○
	VELUX® ROOFLIGHT IN KITCHEN	✗	✗	✗	✗	✗	✗	✗	✗	✗	✗	✗	✗	✗	✗	✗	✗	✗	✗	✗
	'LOW E' PVCu THERMAGLASS ARGON-FILLED DOUBLE GLAZING	○	○	○	○	○	○	○	○	○	○	○	○	○	○	○	○	○	○	○
INTERIOR	WINTER ELECTRIC PACK	○	○	○	○	○	○	○	○	○	○	○	○	○	○	○	○	○	○	○
	WINTER PREMIUM PACK	○	○	○	○	○	○	○	○	○	○	○	○	○	○	○	○	○	○	○
	VOILES THROUGHOUT	○	○	○	○	○	○	○	○	○	○	○	○	○	○	○	○	○	○	○
LOUNGE/DINING AREA	ELECTRIC FIRE	✗	✗	✗	✗	✗	✗	✗	✗	✓	✓	✓	✓	✓	✓	✓	✓	✓	✓	✓
	SCATTER CUSHIONS	✓	✓	✓	✓	✓	✓	✓	✓	✓	✓	✓	✓	✓	✓	✓	✓	○	○	○
	BLUETOOTH SOUND SYSTEM	✗	✗	✗	✗	✗	✗	✗	✗	✗	✗	✗	✗	✗	✗	✗	✗	○	○	○
	USB SOCKET IN LOUNGE	○	○	○	○	○	○	○	○	○	○	○	○	○	○	○	○	✓	✓	✓
	SEPARATE LOUNGE / KITCHEN	✗	✗	✗	✗	✗	✗	✗	✗	✗	✗	✗	✗	✗	✗	✗	✗	✗	✗	✗
	FREE-STANDING DINING TABLE & CHAIRS	○	○	○	○	○	○	○	○	○	○	○	○	○	○	○	○	○	○	○
	L-SHAPED DINETTE SEATING	✓	✓	✓	✓	✓	✓	✗	✓	✗	○	○	✗	✗	○	○	○	✓	✓	✓
KITCHEN	POWERED COOKER HOOD	○	○	○	○	○	○	○	○	✓	✓	✓	✓	✓	✓	✓	✓	✓	✓	✓
	FREE-STANDING FRIDGE OR FRIDGE FREEZER	○	○	○	○	○	○	○	○	○	○	○	○	○	○	○	○	○	○	○
	INTEGRATED FRIDGE FREEZER	○	○	○	○	○	○	○	○	○	○	○	○	○	○	○	○	○	○	○
	INTEGRATED MICROWAVE OVEN	○	○	○	○	○	○	○	○	○	○	○	○	○	○	○	○	○	○	○
	DISHWASHER	✗	✗	✗	✗	✗	✗	✗	✗	✗	✗	✗	✗	✗	✗	✗	✗	✗	✗	✗
	WASHING MACHINE	✗	✗	✗	✗	✗	✗	✗	✗	✗	✗	✗	✗	✗	✗	✗	✗	✗	✗	✗
	WINE COOLER	✗	✗	✗	✗	✗	✗	✗	✗	✗	✗	✗	✗	✗	✗	✗	✗	✗	✗	✗
	NEFF APPLIANCE UPGRADE	✗	✗	✗	✗	✗	✗	✗	✗	✗	✗	✗	✗	✗	✗	✗	✗	✗	✗	✗
BATHROOM	DOMESTIC STYLE BATH	✗	✗	✗	✗	✗	✗	✗	✗	✗	✗	✗	✗	✗	✗	✗	✗	✗	✗	✗
	SEPARATE/EN SUITE TOILET	✗	✗	✗	✗	✓	✓	✓	✓	✗	✗	✗	✗	✓	✓	✓	✓	✓	✓	✓
	EN SUITE SHOWER OR BATH	✗	✗	✗	✗	✗	✗	✗	✗	✗	✗	✗	✗	✗	✗	✗	✗	✗	✗	✗
	BATHROOM EXTRACTOR FAN	○	○	○	○	○	○	○	○	✓	✓	✓	✓	✓	✓	✓	✓	✓	✓	✓
BEDROOMS	LIFT-UP DOUBLE BED IN MASTER BEDROOM	○	○	○	○	○	○	○	○	✓	✓	✓	✓	✓	✓	✓	✓	✓	✓	✓
	KING SIZE BED IN MASTER BEDROOM	✗	✗	✗	✓	✗	✓	✓	✓	✗	✓	✓	✗	✗	✗	✗	✗	✓	✓	✗
	DUVET COVERS AND PILLOWCASES	○	○	○	○	○	○	○	○	○	○	○	○	○	○	○	○	○	○	○
	SPACE SAVER BED (TWIN ROOM ONLY)	○	○	○	○	○	○	○	○	○	○	○	○	○	○	○	○	○	○	○
	EXCLUSIVE POCKET SPRUNG MATTRESS	✗	✗	✗	✗	✗	✗	✗	✗	✗	✗	✗	✗	✗	✗	✗	✗	○	○	○
	USB SOCKET IN BEDROOMS	○	○	○	○	○	○	○	○	○	○	○	○	○	○	○	○	✓	✓	✓
	TV POINT IN MASTER BEDROOM	✗	✗	✗	✗	✗	✗	✗	✗	✓	✓	✓	✓	✓	✓	✓	✓	✓	✓	✓
	TV POINT IN 1 X TWIN ROOM	✗	✗	✗	✗	✗	✗	✗	✗	✓	✓	✓	✓	✓	✓	✓	✓	✓	✓	✓
	RESIDENTIAL BUILD BS3632	✗	✗	✗	✗	✗	✗	✗	✗	✗	✗	✗	✗	✗	✗	✗	✗	✗	✗	✗

It is recommended that units with NEFF appliances are to be on a 32A supply

THE ST DAVID		THE BEVERLEY			THE DERWENT	THE WINDERMERE				THE INGLETON		THE LANGDALE		THE AMBLESIDE		THE BALMORAL		THE WESTWOOD LODGE
38' X 12' 2 BED	40' X 12' 3 BED	36' X 12' 2 BED	39' X 12' 2 BED	40' X 12' 3 BED	38' X 12' 2 BED WCF	40' X 12' 2 BED	40' X 12' 3 BED	40' X 13' 2 BED	40' X 13' 3 BED	40' X 13' 2 BED	41' X 13' 3 BED	40' X 13' 2 BED	41' X 13' 3 BED	40' X 13' 2 BED	41' X 13' 3 BED	43' X 14' 2 BED	43' X 14' 3 BED	44' X 14' 2 BED
✓	✓	✓	✓	✓	✓	✓	✓	✓	✓	✗	✗	✗	✗	✗	✗	✗	✗	✗
✗	✗	✗	✗	✗	✗	✗	✗	✗	✗	✓	✓	✓	✓	✓	✓	✗	✗	✗
○	○	○	○	○	○	○	○	○	○	○	○	○	○	○	○	✗	✗	✗
✗	✗	✗	✗	✗	✗	✗	✗	✗	✗	✗	✗	✗	✗	✗	✗	✓	✓	✓
✗	✗	✗	✗	✗	✗	✗	✗	✗	✗	✗	✗	✗	✗	○	○	✓	✓	✓
✗	✗	✗	✗	✗	✗	✗	✗	✗	✗	○	○	○	○	○	○	○	○	○
✓	✓	✓	✓	✓	✓	✓	✓	✓	✓	✓	✓	✓	✓	✓	✓	✓	✓	✓
✗	✗	✗	✗	✗	○	○	○	○	○	✗	✗	✗	✗	✓	✓	✗	✗	✗
✗	✗	✗	✗	✗	✗	✗	✗	✗	✗	✗	✗	✗	✗	✗	✗	✗	✗	✗
○	○	○	○	○	✗	○	○	○	○	✓	✓	✓	✓	○	○	✓	✓	✓
✗	✗	✗	✗	✗	✗	✗	✗	✗	✗	✗	✗	✗	✗	○	○	✗	✗	✓
○	○	○	○	○	○	○	○	○	○	✓	✓	✓	✓	✓	✓	✓	✓	✓
○	○	○	○	○	○	○	○	○	○	✗	✗	✗	✗	✗	✗	✗	✗	✗
○	○	○	○	○	○	○	○	○	○	✓	✓	✓	✓	✓	✓	✓	✓	✓
○	○	○	○	○	○	○	○	○	○	✗	✗	✗	✗	✗	✗	✗	✗	✗
○	○	○	○	○	○	○	○	○	○	✗	✗	✗	✗	✓	✓	✓	✓	✓
○	○	○	○	○	○	○	○	○	○	○	○	○	○	○	○	✗	✗	✗
○	○	○	○	○	○	○	○	○	○	○	○	○	○	○	○	✗	✗	✗
○	○	○	○	○	○	○	○	○	○	○	○	○	○	○	○	✗	✗	✗
○	○	○	○	○	○	○	○	○	○	○	○	○	○	○	○	✗	✗	✗
○	○	○	○	○	○	○	○	○	○	○	○	○	○	○	○	✗	✗	✗
○	○	○	○	○	○	○	○	○	○	○	○	○	○	○	○	✗	✗	✗
○	○	○	○	○	○	○	○	○	○	○	○	○	○	○	○	✗	✗	✗
○	○	○	○	○	○	○	○	○	○	○	○	○	○	○	○	✗	✗	✗
○	○	○	○	○	○	○	○	○	○	○	○	○	○	○	○	✗	✗	✗
○	○	○	○	○	○	○	○	○	○	○	○	○	○	○	○	✗	✗	✗
○	○	○	○	○	○	○	○	○	○	○	○	○	○	○	○	✗	✗	✗
○	○	○	○	○	○	○	○	○	○	○	○	○	○	○	○	✗	✗	✗
○	○	○	○	○	○	○	○	○	○	○	○	○	○	○	○	✗	✗	✗
○	○	○	○	○	○	○	○	○	○	○	○	○	○	○	○	✗	✗	✗
○	○	○	○	○	○	○	○	○	○	○	○	○	○	○	○	✗	✗	✗
○	○	○	○	○	○	○	○	○	○	○	○	○	○	○	○	✗	✗	✗
○	○	○	○	○	○	○	○	○	○	○	○	○	○	○	○	✗	✗	✗
○	○	○	○	○	○	○	○	○	○	○	○	○	○	○	○	✗	✗	✗
○	○	○	○	○	○	○	○	○	○	○	○	○	○	○	○	✗	✗	✗
○	○	○	○	○	○	○	○	○	○	○	○	○	○	○	○	✗	✗	✗
○	○	○	○	○	○	○	○	○	○	○	○	○	○	○	○	✗	✗	✗
○	○	○	○	○	○	○	○	○	○	○	○	○	○	○	○	✗	✗	✗
○	○	○	○	○	○	○	○	○	○	○	○	○	○	○	○	✗	✗	✗
○	○	○	○	○	○	○	○	○	○	○	○	○	○	○	○	✗	✗	✗
○	○	○	○	○	○	○	○	○	○	○	○	○	○	○	○	✗	✗	✗
○	○	○	○	○	○	○	○	○	○	○	○	○	○	○	○	✗	✗	✗
○	○	○	○	○	○	○	○	○	○	○	○	○	○	○	○	✗	✗	✗
○	○	○	○	○	○	○	○	○	○	○	○	○	○	○	○	✗	✗	✗
○	○	○	○	○	○	○	○	○	○	○	○	○	○	○	○	✗	✗	✗
○	○	○	○	○	○	○	○	○	○	○	○	○	○	○	○	✗	✗	✗
○	○	○	○	○	○	○	○	○	○	○	○	○	○	○	○	✗	✗	✗
○	○	○	○	○	○	○	○	○	○	○	○	○	○	○	○	✗	✗	✗
○	○	○	○	○	○	○	○	○	○	○	○	○	○	○	○	✗	✗	✗
○	○	○	○	○	○	○	○	○	○	○	○	○	○	○	○	✗	✗	✗
○	○	○	○	○	○	○	○	○	○	○	○	○	○	○	○	✗	✗	✗
○	○	○	○	○	○	○	○	○	○	○	○	○	○	○	○	✗	✗	✗
○	○	○	○	○	○	○	○	○	○	○	○	○	○	○	○	✗	✗	✗
○	○	○	○	○	○	○	○	○	○	○	○	○	○	○	○	✗	✗	✗
○	○	○	○	○	○	○	○	○	○	○	○	○	○	○	○	✗	✗	✗
○	○	○	○	○	○	○	○	○	○	○	○	○	○	○	○	✗	✗	✗
○	○	○	○	○	○	○	○	○	○	○	○	○	○	○	○	✗	✗	✗
○	○	○	○	○	○	○	○	○	○	○	○	○	○	○	○	✗	✗	

Standard across the whole ABI Collection.

For your comfort and safety, all ABI holiday homes also include a list of standard items, fittings and safety features.

✓ 100mm insulation in roof

✓ Upgraded external walls with 50mm insulation (except The Coworth)

✓ Domestic gutters and downpipes

✓ Domestic style internal doors

✓ Domestic mattresses, 3 times more filling, more durable covering and now with Crib 5 protection

✓ Electric fire (except The Coworth)

✓ Thermostatic shower mixer valve

✓ Underlay in carpeted areas (except The Coworth bedrooms)

✓ Low energy bulbs throughout and LED bulbs in all spotlights

✓ Lined curtains across all holiday homes (excluding The Coworth front end but available as part of Deluxe pack)

✓ Pull out bed in lounge

✓ Steel pantile roof

✓ Hard wired smoke detector

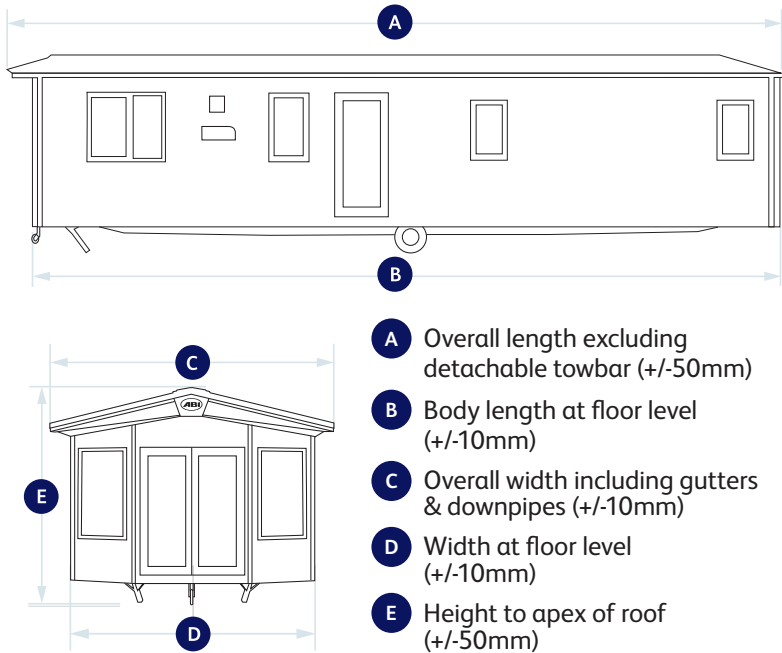
✓ Carbon monoxide detector x2

✓ Fire extinguisher



MODEL SIZE	A	B	C	D	E
THE COWORTH 28' X 10' 2 BED	9.000	8.700	3.340	3.070	3.448
THE COWORTH 32' X 10' 2 BED	10.220	9.920	3.340	3.070	3.448
THE COWORTH 36' X 10' 3 BED	11.440	11.140	3.340	3.070	3.448
THE COWORTH 28' X 12' 2 BED	9.000	8.700	3.950	3.680	3.457
THE COWORTH 32' X 12' 2 BED	10.220	9.920	3.950	3.680	3.457
THE COWORTH 36' X 12' 2 BED	11.440	11.140	3.950	3.680	3.457
THE COWORTH 36' X 12' 3 BED	11.440	11.140	3.950	3.680	3.457
THE COWORTH 39' X 12' 3 BED	12.360	12.060	3.950	3.680	3.457
THE KESWICK 28' X 10' 2 BED	9.160	8.760	3.400	3.130	3.448
THE KESWICK 32' X 10' 2 BED	10.390	9.980	3.400	3.130	3.448
THE KESWICK 36' X 10' 3 BED	11.610	11.200	3.400	3.130	3.448
THE KESWICK 28' X 12' 2 BED	9.170	8.760	4.010	3.740	3.457
THE KESWICK 32' X 12' 2 BED	10.390	9.980	4.010	3.740	3.457
THE KESWICK 36' X 12' 2 BED	11.610	11.200	4.010	3.740	3.457
THE KESWICK 36' X 12' 3 BED	11.610	11.200	4.010	3.740	3.457
THE KESWICK 39' X 12' 3 BED	12.520	12.120	4.010	3.740	3.457
THE WIMBLEDON 37' X 12' 2 BED	11.530	11.280	4.010	3.680	3.457
THE WIMBLEDON 39' X 12' 2 BED	12.133	11.887	4.010	3.680	3.457
THE WIMBLEDON 40' X 12' 3 BED	12.592	12.344	4.010	3.680	3.457
THE ST DAVID 38' X 12' 2 BED	11.970	11.650	3.950	3.680	3.457
THE ST DAVID 40' X 12' 3 BED	12.730	12.410	3.950	3.680	3.457
THE BEVERLEY 36' X 12' 2 BED	11.284	10.972	3.950	3.680	3.457
THE BEVERLEY 39' X 12' 2 BED	12.199	11.887	3.950	3.680	3.457
THE BEVERLEY 40' X 12' 3 BED	12.565	12.344	3.950	3.680	3.457
THE DERWENT WCF 38' X 12' 2 BED	11.990	11.656	4.010	3.740	3.457
THE WINDERMERE 40' X 12' 2 BED	12.630	12.300	3.950	3.680	3.457
THE WINDERMERE 40' X 12' 3 BED	12.630	12.300	3.950	3.680	3.457
THE WINDERMERE 40' X 13' 2 BED	12.630	12.300	4.250	3.980	3.590
THE WINDERMERE 40' X 13' 3 BED	12.630	12.300	4.250	3.980	3.590
THE INGLETON 40' X 13' 2 BED	12.592	12.344	4.250	3.980	3.590
THE INGLETON 41' X 13' 3 BED	12.897	12.649	4.250	3.980	3.590
THE LANGDALE 40' X 13' 2 BED	12.700	12.360	4.250	3.980	3.590
THE LANGDALE 41' X 13' 3 BED	13.000	12.670	4.250	3.980	3.590
THE AMBLESIDE 40' X 13' 2 BED	12.581	12.301	4.250	3.980	3.590
THE AMBLESIDE 41' X 13' 3 BED	12.863	12.570	4.250	3.980	3.590
THE AMBLESIDE PREMIER 40' X 14' 2 BED	12.581	12.301	4.580	4.310	3.624
THE AMBLESIDE PREMIER 41' X 14' 3 BED	12.863	12.570	4.580	4.310	3.624
THE BALMORAL 43' X 14' 2 BED	13.630	13.300	4.580	4.310	3.624
THE BALMORAL 43' X 14' 3 BED	13.630	13.300	4.580	4.310	3.624
THE WESTWOOD LODGE 44' X 14' 2 BED	13.740	13.610	4.680	4.410	3.990

## KEY TO EXTERNAL DIMENSIONS



### OPTIONAL WINTER PACKS

Winter packs keep your holiday home cosy during colder spells. To ensure your holiday home stays cosy and warm in the winter months, we offer the choice of two winter packs.

#### Winter Premium:

- ‘Low E’ PVCu Thermaglass argon-filled double glazing
- Domestic central heating
- Exterior light
- Extra insulation

#### Winter Electric:

- ‘Low E’ PVCu Thermaglass argon-filled double glazing
- 300W heaters in all bedrooms
- S-shaped towel rail in bathroom
- Exterior light
- Extra insulation



### OPTIONAL RESIDENTIAL SPECIFICATION BS3632

For 2026, certain models are available to be built to BS3632 residential specification. Where a BS3632 build is chosen, the following is included within the build as standard\*:

- Fully galvanised heavy-duty chassis
- Residential levels of ventilation
- ClimaGuard ‘Low E’ PVCu argon-filled double glazing fitted to all doors and windows
- Fully condensing boiler gas central heating
- Residential standard levels of insulation fitted to walls, floors and roof to meet required ‘u’ values
- Sound insulation to the exterior to meet required sound reduction values

\*Other than The Windermere model where the winter premium option must be specified as well

BED SIZE	Master Bed	Twin Bed 1	Twin Bed 2	Twin Bed 3	Twin Bed 4
THE COWORTH 28' X 10' 2 BED	1905 X 1370	1905 X 610	1905 X 610	N/A	N/A
THE COWORTH 32' X 10' 2 BED	1905 X 1370	1905 X 610	1905 X 610	N/A	N/A
THE COWORTH 36' X 10' 3 BED	1905 X 1370	1905 X 610	1905 X 610	1905 X 610	1905 X 610
THE COWORTH 28' X 12' 2 BED	1905 X 1525	1905 X 760	1905 X 760	N/A	N/A
THE COWORTH 32' X 12' 2 BED	1905 X 1370	1905 X 760	1905 X 760	N/A	N/A
THE COWORTH 36' X 12' 2 BED	1905 X 1525	1905 X 760	1905 X 760	N/A	N/A
THE COWORTH 36' X 12' 3 BED	1905 X 1525	1905 X 686	1905 X 686	1905 X 610	1830 X 610
THE COWORTH 39' X 12' 3 BED	1905 X 1525	1905 X 686	1905 X 686	1905 X 686	1905 X 686
THE KESWICK 28' X 10' 2 BED	1905 X 1370	1830 X 610	1830 X 610	N/A	N/A
THE KESWICK 32' X 10' 2 BED	1905 X 1525	1830 X 686	1830 X 686	N/A	N/A
THE KESWICK 36' X 10' 3 BED	1830 X 1525	1905 X 610	1905 X 610	1905 X 610	1905 X 610
THE KESWICK 28' X 12' 2 BED	1905 X 1370	1830 X 686	1830 X 686	N/A	N/A
THE KESWICK 32' X 12' 2 BED	1905 X 1525	1905 X 686	1905 X 686	N/A	N/A
THE KESWICK 36' X 12' 2 BED	1905 X 1525	1905 X 686	1905 X 686	N/A	N/A
THE KESWICK 36' X 12' 3 BED	1905 X 1370	1905 X 686	1905 X 686	1905 X 610	1905 X 610
THE KESWICK 39' X 12' 3 BED	1905 X 1370	1905 X 686	1905 X 686	1905 X 610	1830 X 610
THE WIMBLEDON 37' X 12' 2 BED	1905 X 1525	1905 X 686	1905 X 686	N/A	N/A
THE WIMBLEDON 39' X 12' 2 BED	1905 X 1525	1905 X 686	1905 X 686	N/A	N/A
THE WIMBLEDON 40' X 12' 3 BED	1905 X 1370	1905 X 686	1905 X 686	1905 X 686	1830 X 686
THE ST DAVID 38' X 12' 2 BED	1905 X 1525	1905 X 686	1905 X 686	N/A	N/A
THE ST DAVID 40' X 12' 3 BED	1905 X 1370	1905 X 686	1905 X 686	1905 X 686	1905 X 686
THE BEVERLEY 36' X 12' 2 BED	1905 X 1525	1905 X 686	1905 X 686	N/A	N/A
THE BEVERLEY 39' X 12' 2 BED	1905 X 1525	1905 X 686	1905 X 686	N/A	N/A
THE BEVERLEY 40' X 12' 3 BED	1905 X 1370	1905 X 686	1905 X 686	1830 X 686	1830 X 686
THE DERWENT WCF 38' X 12' 2 BED	1905 X 915 (x2)	1905 X 915	1905 X 915	N/A	N/A
THE WINDERMERE 40' X 12' 2 BED	1905 X 1525	1905 X 686	1905 X 686	N/A	N/A
THE WINDERMERE 40' X 12' 3 BED	1905 X 1370	1905 X 686	1905 X 686	1905 X 686	1830 X 686
THE WINDERMERE 40' X 13' 2 BED	1905 X 1525	1905 X 760	1905 X 760	N/A	N/A
THE WINDERMERE 40' X 13' 3 BED	1905 X 1525	1905 X 760	1905 X 760	1905 X 686	1830 X 686
THE INGLETON 40' X 13' 2 BED	1905 X 1525	1905 X 760	1905 X 760	N/A	N/A
THE INGLETON 41' X 13' 3 BED	1905 X 1370	1905 X 760	1905 X 760	1905 X 686	1905 X 686
THE LANGDALE 40' X 13' 2 BED	1905 X 1525	1905 X 760	1905 X 760	N/A	N/A
THE LANGDALE 41' X 13' 3 BED	1905 X 1370	1905 X 760	1905 X 760	1905 X 686	1905 X 686
THE AMBLESIDE 40' X 13' 2 BED	1905 X 1525	1905 X 760	1905 X 760	N/A	N/A
THE AMBLESIDE 41' X 13' 3 BED	1905 X 1370	1905 X 760	1905 X 760	1905 X 686	1905 X 686
THE AMBLESIDE PREMIER 40' X 14' 2 BED	1905 X 1525	1905 X 915	1905 X 915	N/A	N/A
THE AMBLESIDE PREMIER 41' X 14' 3 BED	1905 X 1370	1905 X 915	1905 X 915	1905 X 686	1905 X 686
THE BALMORAL 43' X 14' 2 BED	1905 X 1525	1905 X 915	1905 X 915	N/A	N/A
THE BALMORAL 43' X 14' 3 BED	1905 X 1525	1905 X 915	1905 X 915	1905 X 686	1905 X 686
THE WESTWOOD LODGE 44' X 14' 2 BED	1905 X 1525	1905 X 915	1905 X 915	N/A	N/A

The content of the brochure is as accurate as possible from information available at the time of going to print. ABI (UK) Ltd. reserves the right to alter specifications, prices and model ranges as materials and conditions are subject to availability and change, and therefore, ABI can accept no responsibility for discrepancies between this information and subsequent models. Illustrations do not reflect any individual holiday homes. All ABI holiday homes are built to comply with the relevant codes of practice required by the National Caravan Council Certification Scheme (EN1647) and therefore are designed for holiday use and not full time residential occupancy. Holiday homes built to BS3632 standard are for residential use. Kitchens may show optional appliances. ABI (UK) Ltd. advise you to contact your nearest dealership to check features, options, specifications and availability prior to ordering. \*Terms, conditions and exclusions apply. Please refer to the ABI Warranty booklet supplied with your ABI holiday home.

# Peace of mind

The level of care, craftsmanship and attention to detail that goes into each holiday home we build is something we pride ourselves on.

That’s why we insist on providing warranties that offer unrivalled protection because, in the unlikely event that something does go wrong, both our reputation for quality and our commitment to you are our priority.

It’s this combination of uncompromising quality, stringent checks and customer-focused care that has seen us become the UK’s best-loved holiday home manufacturer, giving you complete peace of mind from start to finish.

From the moment you take ownership of your ABI, everything inside is covered by a 12-month parts and labour warranty as standard. But it doesn’t end there...



### 3 YEAR WARRANTY\*

After the first year, you’ll enjoy a further 24 months’ cover on:

- Furniture manufactured and fitted by us
- Shower cubicle, topper and door
- Taps, sanitaryware and baths
- Radiators, internal doors and door handles
- Gutters, downpipes and cladding
- Sockets and switches
- Kitchen sink
- Dining table and chairs



### 5 YEAR WARRANTY\*

After the first year, you’ll enjoy an extra 48 months’ structural warranty on:

- Chassis, roof, walls, ceiling, floors and external windows and doors



### 10 YEAR WARRANTY\*

In addition to all this, fully galvanised heavy-duty chassis systems are covered by a full 10-year warranty from the date of purchase



# THAT FINISHING TOUCH

... beautiful, practical, low maintenance decking from AB Sundecks

- Bespoke Designs
- Exclusive Deck Boards
- Storage Hatches
- Exclusive Handrail Options
- Lighting Options
- Easy Access Steps
- Built in Hot Tubs
- Access Ramps
- Locking Gates
- Robust Steel Sub Frame
- Glass Balustrading
- Ten Year Guarantee



Make the most of your outdoor space with AB Sundecks. Choose a deck that means you won't have to spend time on tedious, expensive maintenance.

A beautiful deck really enhances your holiday home. It provides a safe playground for children, a secure place for pets or simply somewhere to sit and relax.

Our decks are built on steel sub frames using high quality galvanised steel and reinforced with PVC joints and our deckboards are completely wood-free meaning there is no rotting or splitting, inside or out. This eradicates the need for the endless maintenance and repairs associated with traditional timber decking.

Our strong, slip resistant PVC boarding is weather-proof and low maintenance and is great for use in gardens, restaurant terracing, holiday home balconies and virtually every outdoor, underfoot project and every deck is perfectly co-ordinated to the design you choose and matching accessories provide the ideal finishing touches.

Our long-life, easy-care decks make a delightful addition to any outdoor space, a space that you will enjoy for years and years to come.



Safety features:

- Class 1Y fire rated
- Self extinguishing
- Steel reinforced
- BS Slip resistant
- BS Resilient
- BS Static Load Tested
- Water resistant

## Let there be light.



Open up views to the outdoors, while welcoming in daylight and fresh air with VELUX roof windows.



**There are so many benefits to VELUX roof windows, especially where space is at a premium.**

VELUX roof windows make it possible to maximise natural light indoors. Typically positioned overhead with the glass facing upwards, roof windows capture the sun's full light whilst also freeing up wall-space.

**Did you know roof windows can also change how a space feels?** Roof windows not only invite in daylight and fresh air, but their clever positioning also allows stale cooking smells and humidity to escape. Making them ideal for busy areas, kitchen spaces, and en suites. Enjoy a feeling of freshness and connection with nature by introducing VELUX roof windows into your holiday home.



- Choose from **solar, electric, or manual** roof window operation.
- Explore the full range of **VELUX blinds and shutters** to enhance and personalise your holiday retreat.
- Enjoy **80 years** of roof window innovation, supported by a 10-year guarantee on roof windows and 3-year guarantee on electrical components and blinds.

**Include a VELUX roof window in your future holiday home. Compatible with multiple ABI home styles.**

Do you need advice choosing your VELUX products? Contact the VELUX Advisory team for friendly advice and design recommendations.

**Tel: 01592 778883**

**Email: [daylight@velux.co.uk](mailto:daylight@velux.co.uk)**







# The simple pleasure of time well spent

Wake up where the air feels fresher and endless skies are painted with vibrant colour. Energy is invigorated with the warmth and wonder of where the day can take you. Rest, rejuvenate and get ready to explore, you're on your ABI break now. The journey to joyful times begins here, where magical moments and memories await. Embrace the feeling of putting your feet up after a fun-filled day of discovery or savour every gentle minute of a well-earned escape into relaxation.

Wherever you find yourself, every detail has been considered to create experiences you can treasure.

One destination. Limitless experiences.	4-5
Loads to feel good about	6-7
Everyone's kind of ABI Life	8-9
Building the best experiences	10-11
Our 2026 Collection	12-83
The Coworth	12-17
The Keswick	18-23
The Wimbledon	24-29
The St David	30-35
The Beverley	36-41
The Derwent	42-47
The Windermere	48-53
The Ingleton	54-59
The Langdale	60-65
The Ambleside	66-71
The Balmoral	72-77
The Westwood Lodge	78-83
Key features & specifications	84-87





Because the little things matter

Discover the new 2026 Collection  
or find your nearest dealership or park  
at [www.abiuk.co.uk](http://www.abiuk.co.uk)

To speak to us, please telephone  
**+44 (0) 1482 678000** or email us  
at [info@abiuk.co.uk](mailto:info@abiuk.co.uk)



To explore our holiday homes on interactive  
virtual tours, visit [www.abiuk.co.uk](http://www.abiuk.co.uk) or  
follow the link on this QR code







## Kit Out Your Home-from-Home with Russell Hobbs

Turn every trip into a home-from-home adventure with Russell Hobbs. Whether you're brewing the perfect cuppa, toasting breakfast, or cooking up a holiday feast, Russell Hobbs makes park life a little more like home.

For a limited time only, **with every ABI purchase, enjoy 30% OFF\*** our stylish and reliable products – perfect for holiday hideaways.

From compact kettles to space-saving toasters, we've got everything you need to make your caravan kitchen sing.



Because the little things matter

**We get life.**

\* T&Cs Apply

# UK Dealer Network



To experience our superior quality range of ABI holiday homes for yourself, simply find your nearest dealership from our trusted network.

Alternatively, visit us online at [www.abiuk.co.uk](http://www.abiuk.co.uk) to use our handy park and dealership locator. You'll also be able to see our full list of European dealerships too.

## Northern Ireland

**Golf Links Holiday Homes**  
Portrush, Co. Antrim  
BT56 8JQ  
028 7082 4644  
[golflinksholidayhomes.co.uk](http://golflinksholidayhomes.co.uk)

**Sandycove Holiday Homes**  
Ballywalter, Co. Down  
BT22 2LA  
028 4275 8200  
[sandycove.co.uk](http://sandycove.co.uk)

## Ireland

**Harry Farrell & Sons**  
Rathcoole, Dublin  
Ireland  
00353 1458 9410  
[harryfarrellsons.ie](http://harryfarrellsons.ie)

**Johnstons' Caravans**  
Letterkenny, Co. Donegal  
Ireland  
00353 74912 24 96  
[johnstonscaravans.ie](http://johnstonscaravans.ie)

**Cunninghams Holiday Homes**  
Ennis Road, Limerick  
Ireland  
00 353 61 451009  
00 353 86 2587910  
[www.cunninghams.ie](http://www.cunninghams.ie)

## Wales

**Broughton Leisure**  
Narberth  
Pembrokeshire  
SA68 0NY  
01834 891444  
[broughtonleisure.co.uk](http://broughtonleisure.co.uk)

**Lloyds Caravan & Lodge Sales**  
Towyn Rd  
Towyn  
Abergele  
North Wales  
LL22 9NW  
01745 832 050  
[lloydsacaravans.co.uk](http://lloydsacaravans.co.uk)

**Mon Caravans Ltd**  
Menai Bridge  
Anglesey  
LL59 5RW  
01248 711070  
[moncaravans.com](http://moncaravans.com)

**Salop Leisure Limited**  
Machynlleth  
SY20 8EG  
01654 705900  
[salopleisure.co.uk](http://salopleisure.co.uk)

## North East England

**Highfield Caravans**  
Bridlington  
YO16 4SJ  
01262 424242  
[highfield-caravans.co.uk](http://highfield-caravans.co.uk)

**Ideal Caravans**  
Langley Moor  
Durham  
DH7 8HA  
01913 780146  
[idealcaravans.co.uk](http://idealcaravans.co.uk)

**Ideal Caravans**  
Adderstone  
Northumberland  
NE70 7JU  
01913 786615  
[idealcaravans.co.uk](http://idealcaravans.co.uk)

## North West England

**Lake Coast and Dale Leisure**  
Carnforth  
Lancashire  
LA5 9RF  
01524 727950  
[lakecoastanddale.co.uk](http://lakecoastanddale.co.uk)

## East England

**M.T. McDonnell & Co**  
Kings Lynn  
Norfolk  
PE32 1QJ  
01553 636243  
[mcdonnellcaravans.co.uk](http://mcdonnellcaravans.co.uk)

**Seymours Caravan Sales**  
Skegness  
PE25 1RB  
01754 764270  
[seymourscaravans.co.uk](http://seymourscaravans.co.uk)

## South West England

**Surf Bay Leisure**  
Winkleigh, Devon  
EX19 8DW  
01837 680100  
[surfbayleisure.co.uk](http://surfbayleisure.co.uk)

**Surf Bay Leisure**  
Bream, Somerset  
TA8 2RP  
01278 751171  
[surfbayleisure.co.uk](http://surfbayleisure.co.uk)

**Surf Bay Leisure**  
Bridport  
DT6 3EX  
01308 427444  
[surfbayleisure.co.uk](http://surfbayleisure.co.uk)

## Central England

**Pioneer Caravans**  
Peterborough  
PE6 7UB  
01733 222244  
[pioneeracaravans.co.uk](http://pioneeracaravans.co.uk)

**Salop Leisure Limited**  
Shrewsbury  
SY5 6QS  
01743 282400  
[salopleisure.co.uk](http://salopleisure.co.uk)

**Salop Leisure Limited**  
Stourport on Severn  
DY13 9QB  
01299 871361  
[salopleisure.co.uk](http://salopleisure.co.uk)



Please scan for  
price list  
information

The content of the brochure is as accurate as possible from information available at the time of going to print. ABI (UK) Ltd. reserves the right to alter specifications, prices and model ranges as materials and conditions are subject to availability and change, and therefore, ABI can accept no responsibility for discrepancies between this information and subsequent models. Illustrations do not reflect any individual holiday homes. All ABI holiday homes are built to comply with the relevant codes of practice required by the National Caravan Council Certification Scheme (EN1647) and therefore are designed for holiday use and not full time residential occupancy. Holiday homes built to BS3632 standard are for residential use. ABI (UK) Ltd. advise you to contact your nearest dealership to check features, options, specifications and availability prior to ordering.