

# The Lodges

Collection 2026

---



Because the little things matter

# Unparalleled lodges

## Priceless escapes

---

ABI lodges are unique. Each one is thoughtfully designed and carefully crafted to give you the kind of escape you deserve in beautiful natural surroundings.

Few other lodges can match the innovation, craftsmanship and comfort you'll find in our lodges. We know the little things matter to you too, so every detail is meticulously perfected.

These exceptional spaces are created to give you blissful, memorable experiences, that's why each moment you spend in them is truly extraordinary.





## Crafting a lifetime of beautiful memories



It takes a great deal of time to create lodges that are like no other. We devote thousands of hours to designing and building your lodge, and go to great lengths to make sure your every escape is extraordinary.

Years of experience go into every stage, making sure our own high standards are always met. Every millimetre, every feature, every detail (even the things you may never see) gets our full and undivided attention. That's why our lodges are beyond compare.





## Little things make all the difference

Nothing can match the majesty of the natural world all around us. It's one of our greatest resources, and like you, we want to help protect and preserve our world for the future.

That's why, for every beautiful holiday home and lodge we make, we offset the carbon emissions we generate by planting a tree and supporting hard working charities right here in the UK.

We put the utmost care into everything we build for you. With your help, we can continue to put the same level of care into looking after our natural environment for generations to come.



### CARBON OFFSET

For every ABI we build, we plant a tree in the UK, as well as supporting projects throughout the world to help reduce the impact of carbon emissions.



### GOOD FOR THE COMMUNITY

We also donate £10 for every ABI we build. With us making thousands of holiday homes every year, that soon adds up.



# The greatest of British escapes

The quality and beauty of an ABI lodge is just the beginning. The splendour and natural wonder of the Great British landscape makes a perfect setting, with an extraordinary experience on your doorstep, just waiting to be discovered.

Every lodge is perfectly placed so you can reconnect and enjoy precious time together, or simply breathe in a moment of solitude. You can meander along peaceful river banks, explore grass-clad hills, take in the stunning scenery at the foot of soaring peaks, or simply soak up the splendour of a sun-hazed beach cove. All with the welcoming comfort of your lodge awaiting your return.







# The Kielder Lodge

---

## Tailor-made tranquillity

Take a journey back to simpler pleasures, to a place where life moves a little more gently. The Kielder has everything you need for the most comfortable of breaks - with a modern aesthetic that makes the wind-down into holiday bliss effortless.





## Take in the views, absorb every moment

Settle into sumptuous comfort amongst stunning surroundings. Our sofas are situated perfectly so you can simply watch the world go by, or enjoy the ease of open-plan living, day or night.

Every touch has been thoughtfully considered, so you appreciate the true level of luxury. Your spacious and inviting living areas create the ideal setting for both a quiet night in or entertaining guests.





You can enjoy sharing good food and happy conversation around the dinner table, or create your own kind of calm in a cuddle of cushions, absorbed in a good book. Tranquil moments are so easy to create in a place designed to nurture connection and joy.





Whether it's invigorating early mornings, or long lie-ins that leave you recharged, you can wake up refreshed in the snug contentment of stillness. The Kielder caters to every rhythm and routine.







And when the day draws in, you can relax in the warmth of a soothing bubble bath before a sound and satisfying slumber. Restful sleep is only a drift away.







## ALL THIS INCLUDED

- ✓ Fully galvanised heavy duty chassis
- ✓ Chateaux Grey hard PVCu cladding
- ✓ Front French doors
- ✓ ClimaGuard 'Low E' PVCu argon-filled double glazing fitted to all doors and windows
- ✓ Residential specification BS3632
- ✓ Exterior lights including canopy lighting
- ✓ Externally vented powered cooker hood
- ✓ Integrated fridge freezer
- ✓ Integrated microwave
- ✓ 40mm worktops
- ✓ TV point in all bedrooms
- ✓ Lift-up bed in master bedroom
- ✓ USB sockets in all bedrooms
- ✓ Full condensing boiler gas central heating
- ✓ 2 free-standing sofas
- ✓ Scatter cushions in lounge
- ✓ Free-standing dining table and chairs
- ✓ Additional sockets next to TV point in lounge
- ✓ USB sockets throughout
- ✓ Satellite co-ax
- ✓ Luxury soft-close toilets
- ✓ Shaver socket
- ✓ Bathroom extractor fans
- ✓ Bathroom with all-in-one-GRP bath
- ✓ Stylish pictures throughout
- ✓ Crib 5 mattresses to all bedrooms
- ✓ High quality internal door frames and doors

## OPTIONAL EXTRAS

- ✓ CanExel™ exterior cladding (available in D5 Ridgewood or Ced-R-Vue styles)
- ✓ Luxury Pack
- ✓ Pull-out bed in lounge
- ✓ Alternative bedroom configurations (see layouts)

## INCLUDED IN LUXURY PACK

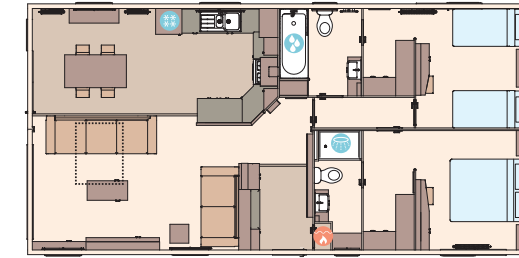
- ✓ Integrated dishwasher
- ✓ Integrated washing machine
- ✓ 'Exclusive' pocket sprung mattresses
- ✓ Plain duvet covers and pillowcases



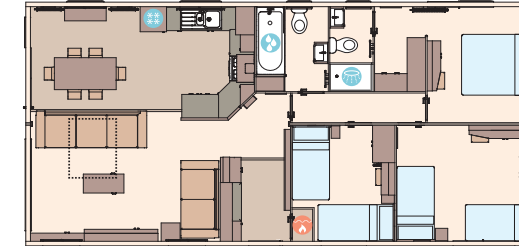
For further information and to take an interactive virtual tour of The Kielder, visit [www.abiuk.co.uk](http://www.abiuk.co.uk)

## STANDARD

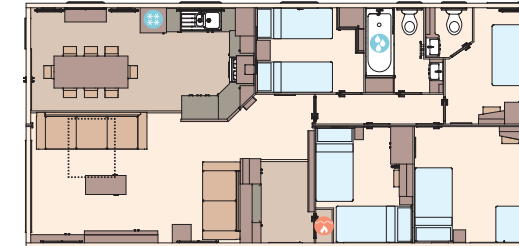
THE KIELDER - 40FT X 20FT X 2 BEDROOM



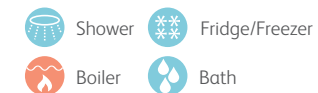
THE KIELDER - 41FT X 20FT X 3 BEDROOM



THE KIELDER - 44FT X 20FT X 4 BEDROOM

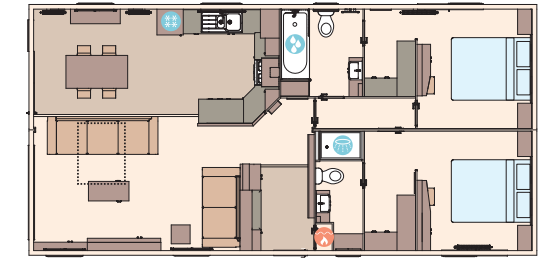


### KEY:

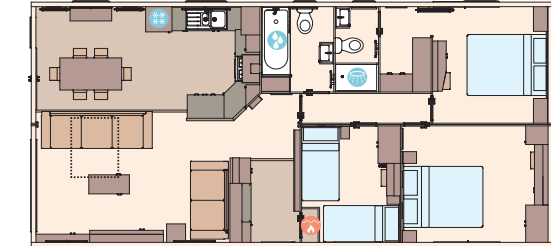


## OPTIONAL

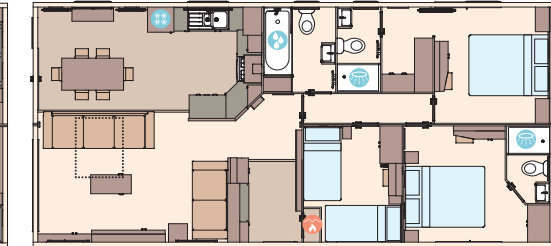
THE KIELDER - 40FT X 20FT X 2 BEDROOM DOUBLE BED OPTION



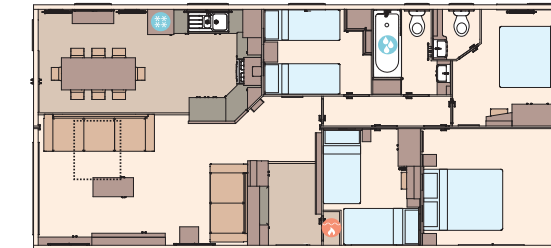
THE KIELDER - 41FT X 20FT X 3 BEDROOM DOUBLE BED OPTION



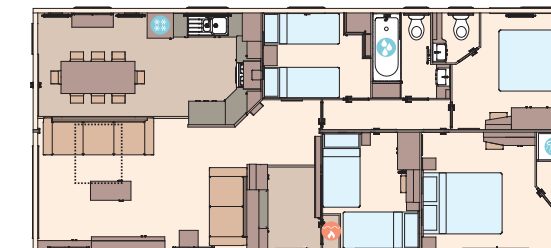
THE KIELDER - 41FT X 20FT X 3 BEDROOM DOUBLE EN SUITE OPTION



THE KIELDER - 44FT X 20FT X 4 BEDROOM DOUBLE BED OPTION



THE KIELDER - 44FT X 20FT X 4 BEDROOM DOUBLE EN SUITE OPTION







# The Harrogate Lodge

---

## A blend of style and serenity

Discover an irresistible blend of modern sophistication and timeless charm. The Harrogate lodge encapsulates an abundance of contemporary luxury. It's thoughtfully designed for moments that are there to be savoured - from the theatre of the kitchen dining area to the majesty of the master suite, every feature has been curated to give you an unforgettable stay.





## Magic and modern elegance

Find yourself in a space that is both fresh and familiar. From afternoons stretched out and sunk into sofas to evenings spent under a blanket of stars, moments of magic are just waiting to be found everywhere.





This is a naturally entertaining space. Take your time to gather and unwind in your sleek and stylish kitchen, made for days discussed and stories shared. Create lasting memories within a harmonious blend of modern and traditional design, as the living area invites you to slow down and indulge in the splendour of your surroundings.





From the rich wood accents that complement the glow of natural light, to the deep, rich tones of our new colour scheme, every element has been selected specifically to create a warm and inviting ambience.







Then, when you retire to the sanctuary of the master bedroom, you will find a haven of relaxation and contentment. With its plush fabrics and elegant furnishings, this space gives you the kind of tranquillity designed to rejuvenate you after a day of exploration.







## ALL THIS INCLUDED

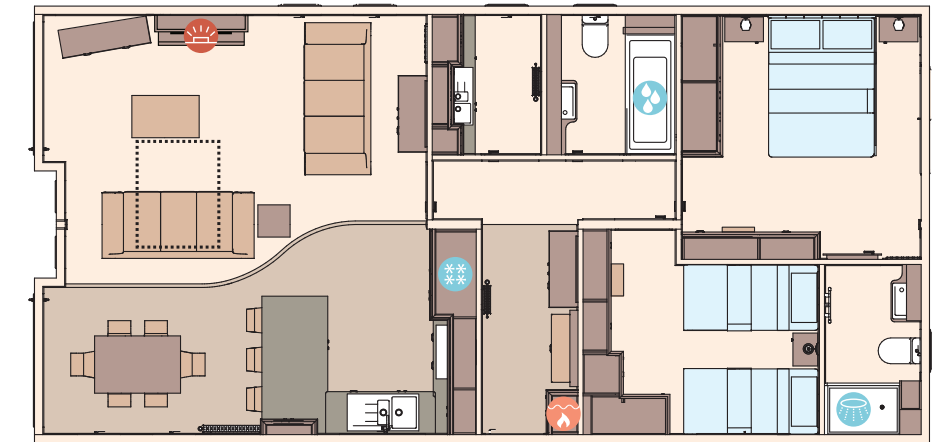
- ✓ Fully galvanised heavy duty chassis
- ✓ CanExel™ exterior Timberwolf cladding in Ced-R-Vue styling
- ✓ ClimaGuard 'Low E' PVCu argon-filled double glazing fitted to all doors and windows
- ✓ VELUX® rooflight window in kitchen
- ✓ Residential specification BS3632
- ✓ Exterior lights including canopy lighting
- ✓ High quality internal door frames and doors
- ✓ Feature ceiling board
- ✓ Entrance hall and cloakroom
- ✓ Utility room including porcelain sink, integrated washing machine and high capacity extractor fan (2 bedroom model)
- ✓ Utility area including integrated washing machine and high capacity extractor fan (3 bedroom model)
- ✓ Integrated oven and 5 burner gas hob
- ✓ Externally vented cooker hood
- ✓ Integrated fridge freezer
- ✓ Integrated microwave
- ✓ Porcelain kitchen sink
- ✓ Integrated dishwasher
- ✓ Deluxe NEFF appliances including microwave, oven and hob
- ✓ Wooden fitted cutlery tray
- ✓ 40mm worktops
- ✓ Breakfast bar with 3 stools
- ✓ Deluxe Bluetooth sound system
- ✓ TV point in master bedroom and twin room
- ✓ Brushed chrome switches throughout
- ✓ Divan beds throughout and lift-up storage king size main bed
- ✓ Bedside wall lights
- ✓ Bathroom with 1700mm all-in-one GRP bath and shower enclosure
- ✓ En suite shower in master bedroom
- ✓ Feature electric fire
- ✓ Contemporary radiators in lounge and master bedroom
- ✓ Condensing boiler and gas central heating
- ✓ Luxury soft-close toilets
- ✓ 2 free-standing sofas with scatter cushions
- ✓ Fold-out bed in lounge
- ✓ Lounge pouffe including storage
- ✓ Floor standing lamp in lounge
- ✓ Plain duvet covers, pillowcases, bedthrows and scatter cushions
- ✓ 'Exclusive' pocket sprung mattresses
- ✓ Satellite co-ax
- ✓ USB sockets for convenience
- ✓ Shaver socket in main bathroom and en suite
- ✓ Soft-close hinges throughout
- ✓ Increased storage in utility room (2 bedroom model)
- ✓ Free-standing dining table and 6 chairs to all models
- ✓ Feature wood panelling walls in master bedroom and 1 x twinroom

## OPTIONAL EXTRAS

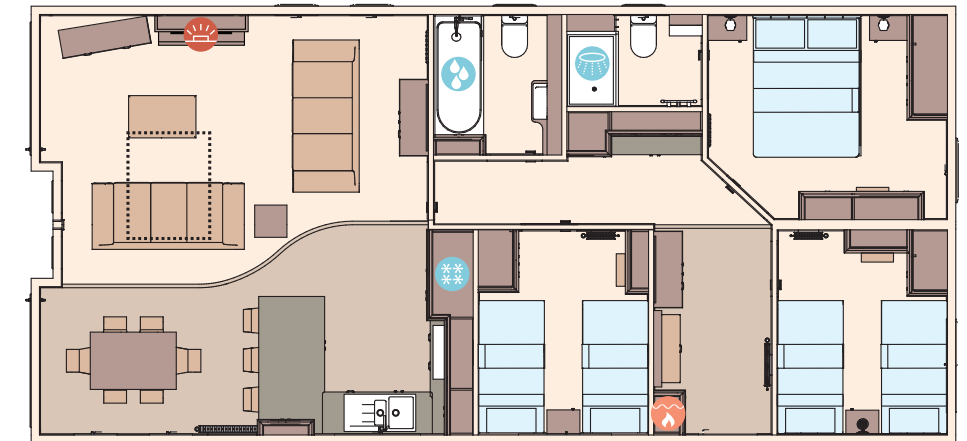
- ✓ Lindab® magestic galvanised gutters and downpipes in lieu of domestic style guttering

It is recommended that units with NEFF appliances are to be on a 32A supply

## THE HARROGATE - 41FT X 20FT X 2 BEDROOM



## THE HARROGATE - 42FT X 20FT X 3 BEDROOM



**KEY:** Fire Boiler Shower Bath Fridge/Freezer Front pull out bed



For further information and to take an interactive virtual tour of The Harrogate, visit [www.abiuk.co.uk](http://www.abiuk.co.uk)





# Adventures await

This might be the end of our lodges brochure, but it's only the beginning of your relaxing holidays with ABI. Whether you're looking for the lodge that'll give you your first taste of the ABI life, or you're thinking about finding another dream escape, your next adventure starts right here.

## Enjoy an ABI life

Just get in touch for more information about our lodges and to find your nearest dealership or park.

[www.abiuk.co.uk](http://www.abiuk.co.uk)  
[info@abiuk.co.uk](mailto:info@abiuk.co.uk)  
Tel: +44 (0) 1482 678000



**Because the little things matter**

The content of the brochure is as accurate as possible from information available at the time of going to print. ABI (UK) Ltd. reserves the right to alter specifications, prices and model ranges as materials and conditions are subject to availability and change, and therefore, ABI can accept no responsibility for discrepancies between this information and subsequent models. All ABI lodges are built to BS3632 as standard and can be for residential use. Some items featured in the photography are scene-setting props or optional extras, not included in your purchase. ABI (UK) Ltd. advise you to contact your nearest dealership to check features, options, specifications and availability prior to ordering.





ABIHolidayHomes

[www.abiuk.co.uk](http://www.abiuk.co.uk)

Tel: +44 (0) 1482 678000

Email: [info@abiuk.co.uk](mailto:info@abiuk.co.uk)